

Product datasheet for **TA331915**

TACO1 Rabbit Polyclonal Antibody

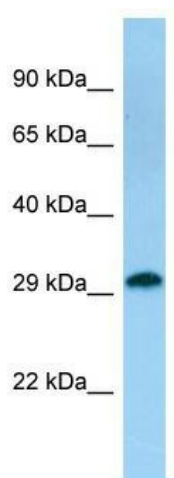
Product data:

Product Type:	Primary Antibodies
Applications:	WB
Recommended Dilution:	WB
Reactivity:	Human
Host:	Rabbit
Isotype:	IgG
Clonality:	Polyclonal
Immunogen:	The immunogen for Anti-TACO1 Antibody is: synthetic peptide directed towards the C-terminal region of Human TACO1. Synthetic peptide located within the following region: NLERALEMAIEAGAEDVKETEDEEERNVFKFICDASSLHQVRKKLDSLGL
Formulation:	Liquid. Purified antibody supplied in 1x PBS buffer with 0.09% (w/v) sodium azide and 2% sucrose. <i>Note that this product is shipped as lyophilized powder to China customers.</i>
Conjugation:	Unconjugated
Storage:	Store at -20°C as received.
Stability:	Stable for 12 months from date of receipt.
Predicted Protein Size:	33 kDa
Gene Name:	translational activator of cytochrome c oxidase I
Database Link:	NP_057444 Entrez Gene 51204 Human Q9BSH4
Background:	This gene encodes a mitochondrial protein that function as a translational activator of mitochondrially-encoded cytochrome c oxidase 1. Mutations in this gene are associated with Leigh syndrome.
Synonyms:	CCDC44
Note:	Immunogen sequence homology: Dog: 100%; Pig: 100%; Horse: 100%; Human: 100%; Rabbit: 100%; Rat: 93%; Mouse: 93%; Bovine: 93%; Zebrafish: 86%; Guinea pig: 86%



[View online »](#)

Product images:



Host: Rabbit; Target Name: TACO1; Sample
Tissue: Fetal Kidney lysates; Antibody Dilution:
1.0ug/ml