

Product datasheet for **TA331913**

VCX3A Rabbit Polyclonal Antibody

Product data:

Product Type:	Primary Antibodies
Applications:	WB
Recommended Dilution:	WB
Reactivity:	Human
Host:	Rabbit
Isotype:	IgG
Clonality:	Polyclonal
Immunogen:	The immunogen for Anti-VCX3A Antibody is: synthetic peptide directed towards the N-terminal region of Human VCX3A. Synthetic peptide located within the following region: SPKPRASGPPAKATEAGKRKSSSQSPSPDKKKTKVAKKGKAVRRGRRG
Formulation:	Liquid. Purified antibody supplied in 1x PBS buffer with 0.09% (w/v) sodium azide and 2% sucrose. <i>Note that this product is shipped as lyophilized powder to China customers.</i>
Conjugation:	Unconjugated
Storage:	Store at -20°C as received.
Stability:	Stable for 12 months from date of receipt.
Predicted Protein Size:	20 kDa
Gene Name:	variable charge, X-linked 3A
Database Link:	NP_057463 Entrez Gene 51481 Human Q9NNX9



[View online »](#)

Background:

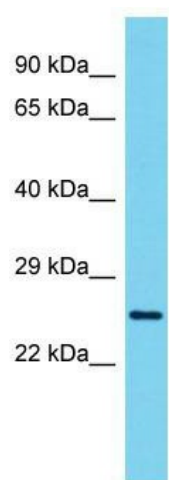
This gene belongs to the VCX/Y gene family, which has multiple members on both X and Y chromosomes, and all are expressed exclusively in male germ cells. The X-linked members are clustered on chromosome Xp22 and Y-linked members are two identical copies of the gene within a palindromic region on Yq11. The family members share a high degree of sequence identity, with the exception that a 30-bp unit is tandemly repeated in X-linked members but occurs only once in Y-linked members. The VCX gene cluster is polymorphic in terms of copy number; different individuals may have a different number of VCX genes. VCX/Y genes encode small and highly charged proteins of unknown function. The presence of a putative bipartite nuclear localization signal suggests that VCX/Y members are nuclear proteins. This gene contains 8 repeats of the 30-bp unit.

Synonyms:

VCX-8r; VCX-A; VCX3; VCX8R; VCXA

Note:

Immunogen sequence homology: Horse: 100%; Human: 100%

Product images:

Host: Rabbit; Target Name: VCX3A; Sample Tissue: ACHN Whole Cell lysates; Antibody Dilution: 1.0ug/ml