

## Product datasheet for **TA331909**

### C1RL Rabbit Polyclonal Antibody

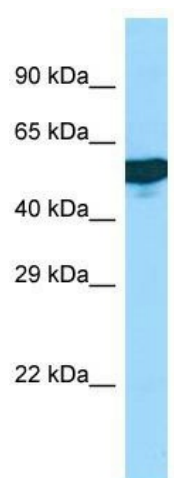
#### Product data:

Product Type:	Primary Antibodies
Applications:	WB
Recommended Dilution:	WB
Reactivity:	Human
Host:	Rabbit
Isotype:	IgG
Clonality:	Polyclonal
Immunogen:	The immunogen for Anti-C1RL Antibody is: synthetic peptide directed towards the middle region of Human C1RL. Synthetic peptide located within the following region: KVQNHCCQEPYYQAAAAGALTCATPGTWKDRQDGEEVLQCMPVCGRPVTPI
Formulation:	Liquid. Purified antibody supplied in 1x PBS buffer with 0.09% (w/v) sodium azide and 2% sucrose. <i>Note that this product is shipped as lyophilized powder to China customers.</i>
Conjugation:	Unconjugated
Storage:	Store at -20°C as received.
Stability:	Stable for 12 months from date of receipt.
Predicted Protein Size:	54 kDa
Gene Name:	complement C1r subcomponent like
Database Link:	<a href="#">NP_057630</a> <a href="#">Entrez Gene 51279 Human</a> <a href="#">Q9NZP8</a>
Background:	C1RL mediates the proteolytic cleavage of HP/haptoglobin in the endoplasmic reticulum.
Synonyms:	C1r-LP; C1RL1; C1RLP; CLSPa
Note:	Immunogen sequence homology: Human: 100%; Mouse: 90%
Protein Families:	Druggable Genome, Protease



[View online »](#)

## Product images:



WB Suggested Anti-C1RL Antibody; Titration: 1.0 ug/ml; Positive Control: Fetal Liver