

## Product datasheet for **TA331908**

### SCAND1 Rabbit Polyclonal Antibody

#### Product data:

|                         |   |
|-------------------------|---|
| Product Type:           | Primary Antibodies  |
| Applications:           | WB  |
| Recommended Dilution:   | WB  |
| Reactivity:             | Human   |
| Host:                   | Rabbit  |
| Isotype:                | IgG   |
| Clonality:              | Polyclonal  |
| Immunogen:              | The immunogen for Anti-SCAND1 Antibody: synthetic peptide directed towards the N terminal of human SCAND1. Synthetic peptide located within the following region:<br>VGSSLPEASPPAPEPSSPNAAVPEAIPTPRAAASAALELPLGPAPVSVAP |
| Formulation:            | Liquid. Purified antibody supplied in 1x PBS buffer with 0.09% (w/v) sodium azide and 2% sucrose.<br><i>Note that this product is shipped as lyophilized powder to China customers.</i>                                 |
| Conjugation:            | Unconjugated  |
| Storage:                | Store at -20°C as received.   |
| Stability:              | Stable for 12 months from date of receipt.  |
| Predicted Protein Size: | 19 kDa  |
| Gene Name:              | SCAN domain containing 1  |
| Database Link:          | <a href="#">NP_057642</a><br><a href="#">Entrez Gene 51282 Human P57086</a>   |



[View online »](#)

**Background:**

The SCAN domain is a highly conserved, leucine-rich motif of approximately 60 aa originally found within a subfamily of zinc finger proteins. This gene belongs to a family of genes that encode an isolated SCAN domain, but no zinc finger motif. Functional studies have established that the SCAN box is a protein interaction domain that mediates both hetero- and homoprotein associations, and maybe involved in regulation of transcriptional activity. Two transcript variants with different 5' UTRs, but encoding the same protein, have been described for this gene. The SCAN domain is a highly conserved, leucine-rich motif of approximately 60 aa originally found within a subfamily of zinc finger proteins. This gene belongs to a family of genes that encode an isolated SCAN domain, but no zinc finger motif. Functional studies have established that the SCAN box is a protein interaction domain that mediates both hetero- and homoprotein associations, and maybe involved in regulation of transcriptional activity. Two transcript variants with different 5' UTRs, but encoding the same protein, have been described for this gene.

**Synonyms:**

RAZ1; SDP1

**Note:**

Immunogen sequence homology: Pig: 100%; Human: 100%; Horse: 90%

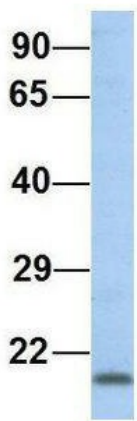
**Protein Families:**

Transcription Factors

**Product images:**

WB Suggested Anti-SCAND1 Antibody Titration:  
0.2-1 ug/ml; ELISA Titer: 1: 62500; Positive  
Control: Jurkat cell lysate

# SCAND1



Rabbit Anti-SCAND1  
Sample Type: Human 721\_B  
Antibody Concentration: 1ug/mL

Host: Rabbit; Target Name: SCAND1; Sample  
Tissue: Human 721\_B; Antibody Dilution:  
1.0ug/ml; SCAND1 is supported by BioGPS gene  
expression data to be expressed in 721\_B