

Product datasheet for **TA331904**

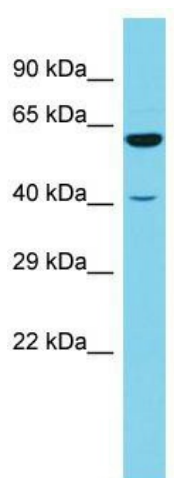
RSRC1 Rabbit Polyclonal Antibody

Product data:

Product Type:	Primary Antibodies
Applications:	WB
Recommended Dilution:	WB
Reactivity:	Human
Host:	Rabbit
Isotype:	IgG
Clonality:	Polyclonal
Immunogen:	The immunogen for Anti-RSRC1 Antibody is: synthetic peptide directed towards the N-terminal region of Human RSRC1. Synthetic peptide located within the following region: SRTYSRKKGGGRKSRKSRKSRDLQPRSHSYDRRRRHRSSSSSYGSRRK
Formulation:	Liquid. Purified antibody supplied in 1x PBS buffer with 0.09% (w/v) sodium azide and 2% sucrose. <i>Note that this product is shipped as lyophilized powder to China customers.</i>
Conjugation:	Unconjugated
Storage:	Store at -20°C as received.
Stability:	Stable for 12 months from date of receipt.
Predicted Protein Size:	37 kDa
Gene Name:	arginine/serine-rich coiled-coil 1
Database Link:	NP_057709 Entrez Gene 51319 Human Q96IZ7
Background:	Serine- and arginine-rich (SR) proteins and SR-related proteins, like RSRC1, function in spliceosome assembly and participate in multiple steps of mRNA splicing.
Synonyms:	BM-011; SFRS21; SRrp53
Note:	Immunogen sequence homology: Pig: 100%; Human: 100%; Guinea pig: 100%; Dog: 93%; Bovine: 93%; Rat: 86%; Mouse: 86%



[View online »](#)

Product images:

Host: Rabbit; Target Name: RSRC1; Sample Tissue: 721_B Whole Cell lysates; Antibody Dilution: 1.0ug/ml; RSRC1 is supported by BioGPS gene expression data to be expressed in 721_B