

Product datasheet for **TA331903**

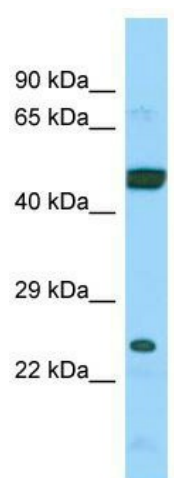
ARL6IP4 Rabbit Polyclonal Antibody

Product data:

Product Type:	Primary Antibodies
Applications:	WB
Recommended Dilution:	WB
Reactivity:	Human
Host:	Rabbit
Isotype:	IgG
Clonality:	Polyclonal
Immunogen:	The immunogen for Anti-ARL6IP4 Antibody is: synthetic peptide directed towards the middle region of Human ARL6IP4. Synthetic peptide located within the following region: SSSSSDGRKKRGKYKDKRRKRRKRRKLLKKGKEKAEAQVEALPGPSL
Formulation:	Liquid. Purified antibody supplied in 1x PBS buffer with 0.09% (w/v) sodium azide and 2% sucrose.
Purification:	Affinity Purified
Conjugation:	Unconjugated
Storage:	Store at -20°C as received.
Stability:	Stable for 12 months from date of receipt.
Predicted Protein Size:	25 kDa
Gene Name:	ADP ribosylation factor like GTPase 6 interacting protein 4
Database Link:	NP_057722 Entrez Gene 51329 Human Q66PJ3
Background:	The function of this protein remains unknown.
Synonyms:	SFRS20; SR-25; SRp25; SRp37
Note:	Immunogen sequence homology: Human: 100%; Dog: 86%; Pig: 86%; Horse: 86%; Bovine: 86%; Rat: 80%



[View online »](#)

Product images:

Host: Rabbit; Target Name: ARL6IP4; Sample
Tissue: 721_B Whole Cell lysates; Antibody
Dilution: 1.0ug/ml