

Product datasheet for **TA331902**

CRNKL1 Rabbit Polyclonal Antibody

Product data:

Product Type:	Primary Antibodies
Applications:	WB
Recommended Dilution:	WB
Reactivity:	Human
Host:	Rabbit
Isotype:	IgG
Clonality:	Polyclonal
Immunogen:	The immunogen for Anti-CRNKL1 Antibody is: synthetic peptide directed towards the C-terminal region of Human CRNKL1. Synthetic peptide located within the following region: SFEEFEGTASDKERVDKLMPEKVKRRKVTDDGSDAGWEEYFDYIFPED
Formulation:	Liquid. Purified antibody supplied in 1x PBS buffer with 0.09% (w/v) sodium azide and 2% sucrose. <i>Note that this product is shipped as lyophilized powder to China customers.</i>
Conjugation:	Unconjugated
Storage:	Store at -20°C as received.
Stability:	Stable for 12 months from date of receipt.
Predicted Protein Size:	93 kDa
Gene Name:	crooked neck pre-mRNA splicing factor 1
Database Link:	NP_057736 Entrez Gene 51340 Human Q9BZJ0
Background:	The crooked neck (crn) gene of Drosophila is essential for embryogenesis and is thought to be involved in cell cycle progression and pre-mRNA splicing. This gene is similar in sequence to crn and encodes a protein which can localize to pre-mRNA splicing complexes in the nucleus. The encoded protein, which contains many tetratricopeptide repeats, is required for pre-mRNA splicing.
Synonyms:	CLF; Clf1; CRN; HCRN; MSTP021; SYF3

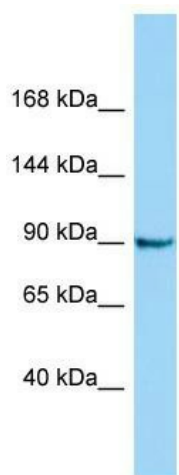


[View online »](#)

Note: Immunogen sequence homology: Pig: 100%; Rat: 100%; Human: 100%; Bovine: 100%; Guinea pig: 100%; Dog: 93%; Horse: 93%; Mouse: 93%; Rabbit: 86%

Protein Pathways: Spliceosome

Product images:



Host: Rabbit; Target Name: CRNKL1; Sample Tissue: Jurkat Whole Cell lysates; Antibody Dilution: 1.0ug/ml