

Product datasheet for **TA331900**

TAS2R3 Rabbit Polyclonal Antibody

Product data:

Product Type:	Primary Antibodies
Applications:	WB
Recommended Dilution:	WB
Reactivity:	Human
Host:	Rabbit
Isotype:	IgG
Clonality:	Polyclonal
Immunogen:	The immunogen for Anti-TAS2R3 Antibody is: synthetic peptide directed towards the C-terminal region of Human TAS2R3. Synthetic peptide located within the following region: RQMLQNGTSSRDPTTEAHKRAIRIILSFFFLFLLYFLAFLIASFGNFLPK
Formulation:	Liquid. Purified antibody supplied in 1x PBS buffer with 0.09% (w/v) sodium azide and 2% sucrose. <i>Note that this product is shipped as lyophilized powder to China customers.</i>
Conjugation:	Unconjugated
Storage:	Store at -20°C as received.
Stability:	Stable for 12 months from date of receipt.
Predicted Protein Size:	35 kDa
Gene Name:	taste 2 receptor member 3
Database Link:	NP_058639 Entrez Gene 50831 Human Q9NYW6
Background:	This gene encodes a member of a family of candidate taste receptors that are members of the G protein-coupled receptor superfamily and that are specifically expressed by taste receptor cells of the tongue and palate epithelia. These apparently intronless taste receptor genes encode a 7-transmembrane receptor protein, functioning as a bitter taste receptor. This gene is clustered with another 3 candidate taste receptor genes in chromosome 7 and is genetically linked to loci that influence bitter perception.
Synonyms:	T2R3



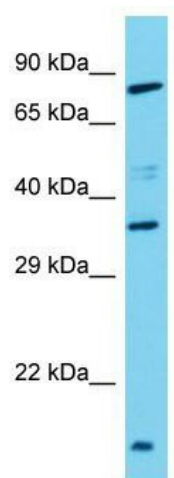
[View online »](#)

Note: Immunogen sequence homology: Human: 100%; Sheep: 83%; Dog: 79%

Protein Families: Druggable Genome, Transmembrane

Protein Pathways: Taste transduction

Product images:



Host: Rabbit; Target Name: TAS2R3; Sample
Tissue: HeLa Whole Cell lysates; Antibody Dilution:
1.0ug/ml