

## Product datasheet for **TA331899**

### TAS2R3 Rabbit Polyclonal Antibody

#### Product data:

Product Type:	Primary Antibodies
Applications:	WB
Recommended Dilution:	WB
Reactivity:	Human
Host:	Rabbit
Isotype:	IgG
Clonality:	Polyclonal
Immunogen:	The immunogen for Anti-TAS2R3 Antibody is: synthetic peptide directed towards the middle region of Human TAS2R3. Synthetic peptide located within the following region: VMVWMLLGALLSCGSTASLINEFKLYSVFRGIEATRNVTEHFRKKRSEY
Formulation:	Liquid. Purified antibody supplied in 1x PBS buffer with 0.09% (w/v) sodium azide and 2% sucrose. <i>Note that this product is shipped as lyophilized powder to China customers.</i>
Conjugation:	Unconjugated
Storage:	Store at -20°C as received.
Stability:	Stable for 12 months from date of receipt.
Predicted Protein Size:	35 kDa
Gene Name:	taste 2 receptor member 3
Database Link:	<a href="#">NP_058639</a> <a href="#">Entrez Gene 50831 Human</a> <a href="#">Q9NYW6</a>
Background:	This gene encodes a member of a family of candidate taste receptors that are members of the G protein-coupled receptor superfamily and that are specifically expressed by taste receptor cells of the tongue and palate epithelia. These apparently intronless taste receptor genes encode a 7-transmembrane receptor protein, functioning as a bitter taste receptor. This gene is clustered with another 3 candidate taste receptor genes in chromosome 7 and is genetically linked to loci that influence bitter perception.
Synonyms:	T2R3



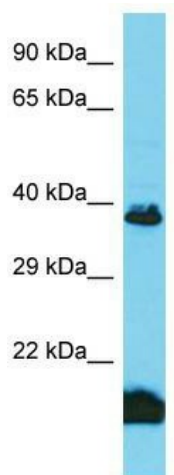
[View online »](#)

**Note:** Immunogen sequence homology: Human: 100%; Horse: 86%; Dog: 85%

**Protein Families:** Druggable Genome, Transmembrane

**Protein Pathways:** Taste transduction

**Product images:**



Host: Rabbit; Target Name: TAS2R3; Sample Tissue: Fetal Kidney lysates; Antibody Dilution: 1.0ug/ml