

Product datasheet for **TA331898**

TLR9 Rabbit Polyclonal Antibody

Product data:

Product Type:	Primary Antibodies
Applications:	WB
Recommended Dilution:	WB
Reactivity:	Human
Host:	Rabbit
Isotype:	IgG
Clonality:	Polyclonal
Immunogen:	The immunogen for Anti-TLR9 Antibody: synthetic peptide directed towards the N terminal of human TLR9. Synthetic peptide located within the following region: VGGNCRRCDHAPNPCMECPRHFPQLHPDTFSHLSRLEGLVLKDSLSLWLN
Formulation:	Liquid. Purified antibody supplied in 1x PBS buffer with 0.09% (w/v) sodium azide and 2% sucrose. <i>Note that this product is shipped as lyophilized powder to China customers.</i>
Conjugation:	Unconjugated
Storage:	Store at -20°C as received.
Stability:	Stable for 12 months from date of receipt.
Predicted Protein Size:	113 kDa
Gene Name:	toll like receptor 9
Database Link:	NP_059138 Entrez Gene 54106 Human Q9NR96



[View online »](#)

Background:

TLR9 participates in the innate immune response to microbial agents. TLR9 detects the unmethylated cytidine-phosphate-guanosine (CpG) motifs present in bacterial DNA. TLR9 acts via MYD88 and TRAF6, leading to NF-kappa-B activation, cytokine secretion and the inflammatory response. The protein encoded by this gene is a member of the Toll-like receptor (TLR) family which plays a fundamental role in pathogen recognition and activation of innate immunity. TLRs are highly conserved from Drosophila to humans and share structural and functional similarities. They recognize pathogen-associated molecular patterns (PAMPs) that are expressed on infectious agents, and mediate the production of cytokines necessary for the development of effective immunity. The various TLRs exhibit different patterns of expression. This gene is preferentially expressed in immune cell rich tissues, such as spleen, lymph node, bone marrow and peripheral blood leukocytes. Studies in mice and human indicate that this receptor mediates cellular response to unmethylated CpG dinucleotides in bacterial DNA to mount an innate immune response. Publication Note: This RefSeq record includes a subset of the publications that are available for this gene. Please see the Entrez Gene record to access additional publications.

Synonyms:

CD289

Note:

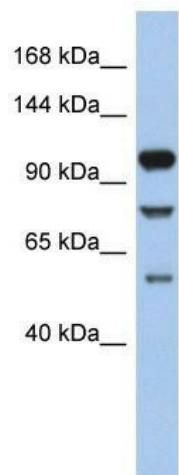
Immunogen sequence homology: Pig: 100%; Goat: 100%; Horse: 100%; Human: 100%; Sheep: 100%; Bovine: 100%; Rat: 93%; Guinea pig: 93%; Mouse: 86%; Rabbit: 86%; Dog: 85%

Protein Families:

Druggable Genome, Transmembrane

Protein Pathways:

Toll-like receptor signaling pathway

Product images:

WB Suggested Anti-TLR9 Antibody Titration: 0.2-1 ug/ml; ELISA Titer: 1: 312500; Positive Control: ACHN cell lysate