

Product datasheet for **TA331897**

DNA Polymerase epsilon (POLE3) Rabbit Polyclonal Antibody

Product data:

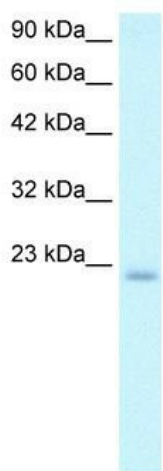
| | |
|-------------------------|--------------------------------------------------------------------------------------------------------------------------------------------------------------------------------------------------------------------------------------------------------------|
| Product Type: | Primary Antibodies |
| Applications: | WB |
| Recommended Dilution: | WB |
| Reactivity: | Human |
| Host: | Rabbit |
| Isotype: | IgG |
| Clonality: | Polyclonal |
| Immunogen: | The immunogen for Anti-POLE3 Antibody: synthetic peptide directed towards the N terminal of human POLE3. Synthetic peptide located within the following region: MAERPDLNLPNAVITRIIKEALPDGVNISKEARSAISRAASVFLYATS |
| Formulation: | Liquid. Purified antibody supplied in 1x PBS buffer with 0.09% (w/v) sodium azide and 2% sucrose. <i>Note that this product is shipped as lyophilized powder to China customers.</i> |
| Conjugation: | Unconjugated |
| Storage: | Store at -20°C as received. |
| Stability: | Stable for 12 months from date of receipt. |
| Predicted Protein Size: | 17 kDa |
| Gene Name: | polymerase (DNA) epsilon 3, accessory subunit |
| Database Link: | NP_059139 Entrez Gene 54107 Human Q9NRF9 |
| Background: | POLE3 is a histone-fold protein that interacts with other histone-fold proteins to bind DNA in a sequence-independent manner. These histone-fold protein dimers combine within larger enzymatic complexes for DNA transcription, replication, and packaging. |
| Synonyms: | CHARAC17; CHRAC17; p17; YBL1 |
| Note: | Immunogen sequence homology: Dog: 100%; Pig: 100%; Rat: 100%; Horse: 100%; Human: 100%; Mouse: 100%; Bovine: 100%; Rabbit: 100%; Guinea pig: 100%; Zebrafish: 85% |



[View online »](#)

Protein Pathways: Base excision repair, DNA replication, Metabolic pathways, Nucleotide excision repair, Purine metabolism, Pyrimidine metabolism

Product images:



WB Suggested Anti-POLE3 Antibody Titration: 2.5ug/ml; Positive Control: Daudi cell lysate POLE3 is supported by BioGPS gene expression data to be expressed in Daudi