

Product datasheet for **TA331896**

CHRAC1 Rabbit Polyclonal Antibody

Product data:

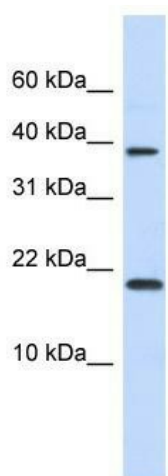
Product Type:	Primary Antibodies
Applications:	WB
Recommended Dilution:	WB
Reactivity:	Human
Host:	Rabbit
Isotype:	IgG
Clonality:	Polyclonal
Immunogen:	The immunogen for Anti-CHRAC1 Antibody: synthetic peptide directed towards the N terminal of human CHRAC1. Synthetic peptide located within the following region: SINQEALVLTAKATELQVCLATYSYRHGSGKEKKVLTYSDLANTAQQSE
Formulation:	Liquid. Purified antibody supplied in 1x PBS buffer with 0.09% (w/v) sodium azide and 2% sucrose. <i>Note that this product is shipped as lyophilized powder to China customers.</i>
Conjugation:	Unconjugated
Storage:	Store at -20°C as received.
Stability:	Stable for 12 months from date of receipt.
Predicted Protein Size:	15 kDa
Gene Name:	chromatin accessibility complex 1
Database Link:	NP_059140 Entrez Gene 54108 Human Q9NRG0
Background:	CHRAC1 is a histone-fold protein that interacts with other histone-fold proteins to bind DNA in a sequence-independent manner. These histone-fold protein dimers combine within larger enzymatic complexes for DNA transcription, replication, and packaging. CHRAC1 is a histone-fold protein that interacts with other histone-fold proteins to bind DNA in a sequence-independent manner. These histone-fold protein dimers combine within larger enzymatic complexes for DNA transcription, replication, and packaging. [supplied by OMIM]
Synonyms:	CHARC1; CHARC15; CHRAC-1; CHRAC-15; CHRAC15; YCL1



[View online »](#)

Note: Immunogen sequence homology: Human: 100%; Rat: 92%; Horse: 92%; Bovine: 92%; Dog: 85%; Pig: 85%; Mouse: 85%; Guinea pig: 85%

Product images:



WB Suggested Anti-CHRAC1 Antibody Titration:
0.2-1 ug/ml; ELISA Titer: 1: 312500; Positive
Control: Human heart