

Product datasheet for **TA331894**

SOX6 Rabbit Polyclonal Antibody

Product data:

Product Type:	Primary Antibodies
Applications:	WB
Recommended Dilution:	WB
Reactivity:	Mouse, Human
Host:	Rabbit
Isotype:	IgG
Clonality:	Polyclonal
Immunogen:	The immunogen for Anti-SOX6 Antibody: synthetic peptide directed towards the middle region of human SOX6. Synthetic peptide located within the following region: YGMKTDGGSLAGNEMINGEDEMEMYDDYEDDPKSDYSSENEAPEAVSAN
Formulation:	Liquid. Purified antibody supplied in 1x PBS buffer with 0.09% (w/v) sodium azide and 2% sucrose. <i>Note that this product is shipped as lyophilized powder to China customers.</i>
Conjugation:	Unconjugated
Storage:	Store at -20°C as received.
Stability:	Stable for 12 months from date of receipt.
Predicted Protein Size:	89 kDa
Gene Name:	SRY-box 6
Database Link:	NP_201583 Entrez Gene 20679 Mouse Entrez Gene 55553 Human P35712



[View online »](#)

Background:

SOX6 is a member of the D subfamily of sex determining region y-related transcription factors that are characterized by a conserved DNA-binding domain termed the high mobility group box and by their ability to bind the minor groove of DNA. SOX6 is a transcriptional activator that is required for normal development of the central nervous system, chondrogenesis and maintenance of cardiac and skeletal muscle cells. SOX6 interacts with other family members to cooperatively activate gene expression. Members of the SOX gene family, such as SOX6, encode transcription factors defined by the conserved high mobility group (HMG) DNA-binding domain. Unlike most transcription factors, SOX transcription factors bind to the minor groove of DNA, causing a 70- to 85-degree bend and introducing local conformational changes (Cohen-Barak et al., 2001 [PubMed 11255018]). [supplied by OMIM]. Publication Note: This RefSeq record includes a subset of the publications that are available for this gene. Please see the Entrez Gene record to access additional publications. PRIMARYREFSEQ_SPAN PRIMARY_IDENTIFIER PRIMARY_SPAN COMP 1-2696 AL136780.1 1-2696 2697-5158 AC009869.7 10394-12855

Synonyms:

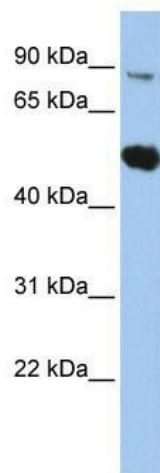
HSSOX6; SOXD

Note:

Immunogen sequence homology: Pig: 100%; Rat: 100%; Horse: 100%; Human: 100%; Mouse: 100%; Bovine: 100%; Rabbit: 100%; Guinea pig: 100%; Dog: 93%; Zebrafish: 79%

Protein Families:

Transcription Factors

Product images:

WB Suggested Anti-SOX6 Antibody Titration: 0.2-1 ug/ml; ELISA Titer: 1: 62500; Positive Control: HepG2 cell lysate