

Product datasheet for **TA331893**

ATAD2B Rabbit Polyclonal Antibody

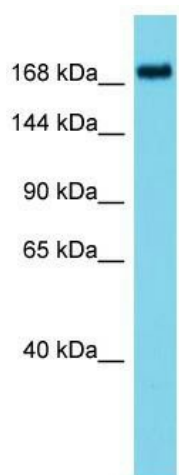
Product data:

Product Type:	Primary Antibodies
Applications:	WB
Recommended Dilution:	WB
Reactivity:	Human
Host:	Rabbit
Isotype:	IgG
Clonality:	Polyclonal
Immunogen:	The immunogen for Anti-ATAD2B Antibody is: synthetic peptide directed towards the N-terminal region of Human ATAD2B. Synthetic peptide located within the following region: PGAGAEPGATGGSSHFISRTSSKTRAASCPAAKAGSGGAGVTLDEAR
Formulation:	Liquid. Purified antibody supplied in 1x PBS buffer with 0.09% (w/v) sodium azide and 2% sucrose.
Conjugation:	Unconjugated
Storage:	Store at -20°C as received.
Stability:	Stable for 12 months from date of receipt.
Predicted Protein Size:	165 kDa
Gene Name:	ATPase family, AAA domain containing 2B
Database Link:	NP_060022 Entrez Gene 54454 Human Q9ULIQ
Background:	The protein encoded by this gene belongs to the AAA ATPase family, CDC48 subfamily. This subfamily members in eukaryotes are involved in the budding and transfer of membrane from the transitional endoplasmic reticulum to the Golgi apparatus. The exact function of this protein is not known.
Synonyms:	KIAA1240; MGC88424
Note:	Immunogen sequence homology: Pig: 100%; Human: 100%; Mouse: 100%; Bovine: 100%; Rabbit: 100%; Guinea pig: 100%; Horse: 93%; Dog: 92%



[View online »](#)

Product images:



Host: Rabbit; Target Name: ATAD2B; Sample
Tissue: HT1080 Whole Cell lysates; Antibody
Dilution: 1.0ug/ml