

## Product datasheet for **TA331892**

### PPP1R12C Rabbit Polyclonal Antibody

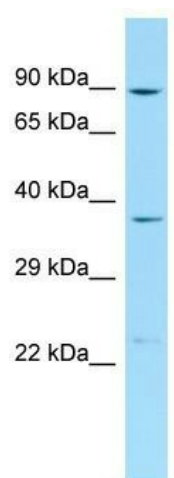
#### Product data:

Product Type:	Primary Antibodies
Applications:	WB
Recommended Dilution:	WB
Reactivity:	Human
Host:	Rabbit
Isotype:	IgG
Clonality:	Polyclonal
Immunogen:	The immunogen for Anti-PPP1R12C Antibody is: synthetic peptide directed towards the middle region of Human PPP1R12C. Synthetic peptide located within the following region: AEKAAGKAPESKPAQSLDPSRRPRVPGVENSDDSPAQRAEAPDGQGPQPQ
Formulation:	Liquid. Purified antibody supplied in 1x PBS buffer with 0.09% (w/v) sodium azide and 2% sucrose.
Conjugation:	Unconjugated
Storage:	Store at -20°C as received.
Stability:	Stable for 12 months from date of receipt.
Predicted Protein Size:	85 kDa
Gene Name:	protein phosphatase 1 regulatory subunit 12C
Database Link:	<a href="#">NP_060077</a> <a href="#">Entrez Gene 54776 Human</a> <a href="#">Q9BZL4</a>
Background:	PPP1R12C regulates myosin phosphatase activity.
Synonyms:	LENG3; MBS85; p84; p85
Note:	Immunogen sequence homology: Human: 100%
Protein Families:	Druggable Genome



[View online »](#)

## Product images:



Host: Rabbit; Target Name: PPP1R12C; Sample Tissue: Placenta lysates; Antibody Dilution: 1.0ug/ml