

## Product datasheet for **TA331891**

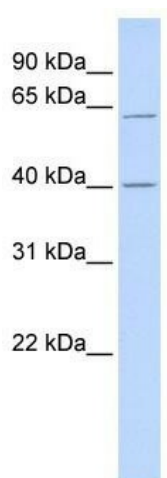
### TRIT1 Rabbit Polyclonal Antibody

#### Product data:

Product Type:	Primary Antibodies
Applications:	WB
Recommended Dilution:	WB
Reactivity:	Human
Host:	Rabbit
Isotype:	IgG
Clonality:	Polyclonal
Immunogen:	The immunogen for Anti-TRIT1 Antibody: synthetic peptide directed towards the middle region of human TRIT1. Synthetic peptide located within the following region: PHDKRKVARSLQVFEETGISHSEFLHRQHTEEGGGLGGPLKFSNPCILW
Formulation:	Liquid. Purified antibody supplied in 1x PBS buffer with 0.09% (w/v) sodium azide and 2% sucrose. <i>Note that this product is shipped as lyophilized powder to China customers.</i>
Conjugation:	Unconjugated
Storage:	Store at -20°C as received.
Stability:	Stable for 12 months from date of receipt.
Predicted Protein Size:	51 kDa
Gene Name:	tRNA isopentenyltransferase 1
Database Link:	<a href="#">NP_060116</a> <a href="#">Entrez Gene 54802 Human Q9H3H1</a>
Background:	TRIT1 is responsible for the modification of A37 to isopentenyl A37 of both cytosolic and mitochondrial tRNAs.
Synonyms:	GRO1; hGRO1; IPPT; IPT; IPTase; MOD5
Note:	Immunogen sequence homology: Dog: 100%; Pig: 100%; Rat: 100%; Horse: 100%; Human: 100%; Bovine: 100%; Rabbit: 100%; Mouse: 92%; Guinea pig: 92%
Protein Pathways:	Metabolic pathways



[View online »](#)

**Product images:**

WB Suggested Anti-TRIT1 Antibody Titration: 0.2-1 ug/ml; ELISA Titer: 1: 12500; Positive Control: Human heart