

Product datasheet for **TA331890**

Kindlin (FERMT1) Rabbit Polyclonal Antibody

Product data:

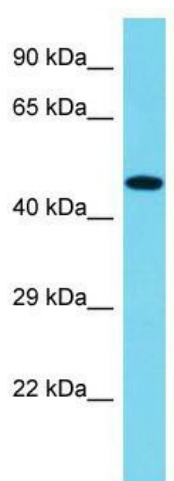
Product Type:	Primary Antibodies
Applications:	WB
Recommended Dilution:	WB
Reactivity:	Human
Host:	Rabbit
Isotype:	IgG
Clonality:	Polyclonal
Immunogen:	The immunogen for Anti-FERMT1 Antibody is: synthetic peptide directed towards the C-terminal region of Human FERMT1. Synthetic peptide located within the following region: VIEFDQNVFTAFTCLSADCKIVHEYIGGYIFLSTRSKDQNETLDEDLFBK
Formulation:	Liquid. Purified antibody supplied in 1x PBS buffer with 0.09% (w/v) sodium azide and 2% sucrose. <i>Note that this product is shipped as lyophilized powder to China customers.</i>
Purification:	Affinity Purified
Conjugation:	Unconjugated
Storage:	Store at -20°C as received.
Stability:	Stable for 12 months from date of receipt.
Predicted Protein Size:	46 kDa
Gene Name:	fermitin family member 1
Database Link:	NP_060141 Entrez Gene 55612 Human Q9BQL6
Background:	This gene encodes a member of the fermitin family, and contains a FERM domain and a pleckstrin homology domain. The encoded protein is involved in integrin signaling and linkage of the actin cytoskeleton to the extracellular matrix. Mutations in this gene have been linked to Kindler syndrome.
Synonyms:	C20orf42; DTGCU2; KIND1; UNC112A; URP1



[View online »](#)

Note: Immunogen sequence homology: Dog: 100%; Pig: 100%; Rat: 100%; Horse: 100%; Human: 100%; Mouse: 100%; Bovine: 100%; Rabbit: 100%; Zebrafish: 100%; Guinea pig: 100%

Product images:



Host: Rabbit; Target Name: FERMT1; Sample Tissue: Jurkat Whole Cell lysates; Antibody Dilution: 1.0ug/ml