

Product datasheet for **TA331888**

PGPEP1 Rabbit Polyclonal Antibody

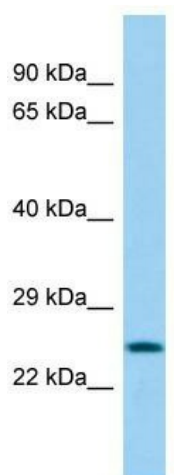
Product data:

Product Type:	Primary Antibodies
Applications:	WB
Recommended Dilution:	WB
Reactivity:	Human
Host:	Rabbit
Isotype:	IgG
Clonality:	Polyclonal
Immunogen:	The immunogen for Anti-PGPEP1 Antibody is: synthetic peptide directed towards the N-terminal region of Human PGPEP1. Synthetic peptide located within the following region: KHSPQLVHVHVGVS GMATTVTLEKCGHNKGYKGLDNCRFPCGSQCCVEDGP
Formulation:	Liquid. Purified antibody supplied in 1x PBS buffer with 0.09% (w/v) sodium azide and 2% sucrose. <i>Note that this product is shipped as lyophilized powder to China customers.</i>
Conjugation:	Unconjugated
Storage:	Store at -20°C as received.
Stability:	Stable for 12 months from date of receipt.
Predicted Protein Size:	23 kDa
Gene Name:	pyroglutamyl-peptidase I
Database Link:	NP_060182 Entrez Gene 54858 Human Q9NXJ5
Background:	Pyroglutamyl peptidase I catalyzes the hydrolysis of N-terminal pyroglutamyl residues from oligopeptides and proteins.
Synonyms:	PAP-I; Pcp; PGI; PGP; PGP-I; PGPI
Note:	Immunogen sequence homology: Dog: 100%; Pig: 100%; Rat: 100%; Horse: 100%; Human: 100%; Mouse: 100%; Bovine: 100%; Rabbit: 100%; Guinea pig: 100%; Zebrafish: 83%
Protein Families:	Druggable Genome, Protease



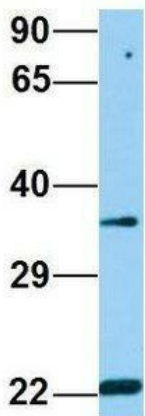
[View online »](#)

Product images:



Host: Rabbit; Target Name: PGPEP1; Sample Tissue: HepG2 Whole Cell lysates; Antibody Dilution: 1.0ug/ml

PGPEP1



Rabbit Anti-PGPEP1
 Sample Type: Human Fetal Heart
 Antibody Concentration: 1ug/mL

Host: Rabbit; Target Name: PGPEP1; Sample Tissue: Human Fetal Heart; Antibody Dilution: 1.0ug/ml