

Product datasheet for **TA331886**

THUMPD1 Rabbit Polyclonal Antibody

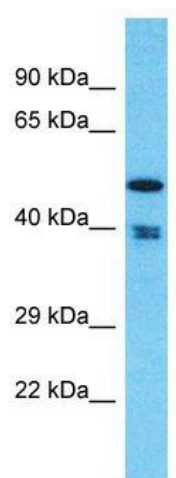
Product data:

Product Type:	Primary Antibodies
Applications:	WB
Recommended Dilution:	WB
Reactivity:	Human
Host:	Rabbit
Isotype:	IgG
Clonality:	Polyclonal
Immunogen:	The immunogen for Anti-THUMPD1 Antibody is: synthetic peptide directed towards the C-terminal region of Human THUMPD1. Synthetic peptide located within the following region: KNNQVPENTEELGQTKPSTNPQVVNEGGAKPELASQATEGSKSNENDFS
Formulation:	Liquid. Purified antibody supplied in 1x PBS buffer with 0.09% (w/v) sodium azide and 2% sucrose. <i>Note that this product is shipped as lyophilized powder to China customers.</i>
Conjugation:	Unconjugated
Storage:	Store at -20°C as received.
Stability:	Stable for 12 months from date of receipt.
Predicted Protein Size:	48 kDa
Gene Name:	THUMP domain containing 1
Database Link:	NP_060206 Entrez Gene 55623 Human Q9NXG2
Background:	The function of this protein remains unknown.
Synonyms:	Tan1
Note:	Immunogen sequence homology: Human: 100%; Pig: 91%; Rat: 91%; Guinea pig: 91%; Bovine: 83%



[View online »](#)

Product images:



Host: Rabbit; Target Name: THUMPD1; Sample
Tissue: MCF7 Whole Cell lysates; Antibody
Dilution: 1.0ug/ml