

Product datasheet for **TA331883**

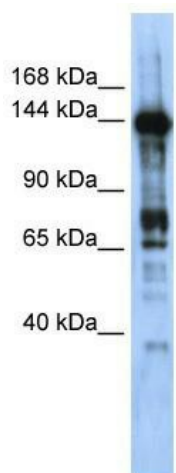
CASZ1 Rabbit Polyclonal Antibody

Product data:

Product Type:	Primary Antibodies
Applications:	WB
Recommended Dilution:	WB
Reactivity:	Human, Mouse
Host:	Rabbit
Isotype:	IgG
Clonality:	Polyclonal
Immunogen:	The immunogen for Anti-CASZ1 Antibody: synthetic peptide directed towards the middle region of human CASZ1. Synthetic peptide located within the following region: TPARFPPAQVKPEPGESTGAPGPHEASQDRSLDLTVKEPSNESNGHAVPA
Formulation:	Liquid. Purified antibody supplied in 1x PBS buffer with 0.09% (w/v) sodium azide and 2% sucrose. <i>Note that this product is shipped as lyophilized powder to China customers.</i>
Conjugation:	Unconjugated
Storage:	Store at -20°C as received.
Stability:	Stable for 12 months from date of receipt.
Predicted Protein Size:	125 kDa
Gene Name:	castor zinc finger 1
Database Link:	NP_060236 Entrez Gene 69743 Mouse Entrez Gene 54897 Human Q86V15
Background:	CASZ1 contains 8 C2H2-type zinc fingers. It is expressed in a number of human tumors and localizes to a chromosomal region frequently lost in tumors of neuroectodermal origin.
Synonyms:	CAS11; CST; dj734G22.1; SRG; ZNF693
Note:	Immunogen sequence homology: Human: 100%; Bovine: 93%; Pig: 79%; Horse: 79%; Guinea pig: 79%; Rat: 77%; Mouse: 77%



[View online »](#)

Product images:

WB Suggested Anti-CASZ1 Antibody Titration: 0.2-1 ug/ml; ELISA Titer: 1: 312500; Positive Control: Transfected 293T