

## Product datasheet for **TA331881**

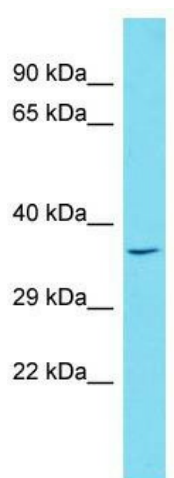
### OPA1L (WBP1L) Rabbit Polyclonal Antibody

#### Product data:

Product Type:	Primary Antibodies
Applications:	WB
Recommended Dilution:	WB
Reactivity:	Human
Host:	Rabbit
Isotype:	IgG
Clonality:	Polyclonal
Immunogen:	The immunogen for Anti-WBP1L Antibody is: synthetic peptide directed towards the C-terminal region of Human WBP1L. Synthetic peptide located within the following region: GSVAGLGELDPGAFLDKDAECREELLKDDSSSEHGAPDSKEKTPGRHRRFT
Formulation:	Liquid. Purified antibody supplied in 1x PBS buffer with 0.09% (w/v) sodium azide and 2% sucrose. <i>Note that this product is shipped as lyophilized powder to China customers.</i>
Conjugation:	Unconjugated
Storage:	Store at -20°C as received.
Stability:	Stable for 12 months from date of receipt.
Predicted Protein Size:	38 kDa
Gene Name:	WW domain binding protein 1-like
Database Link:	<a href="#">NP_060257</a> <a href="#">Entrez Gene 54838 Human</a> <a href="#">Q9NX94</a>
Background:	The function of this protein remains unknown.
Synonyms:	C10orf26; OPA1L; OPAL1
Note:	Immunogen sequence homology: Human: 100%; Zebrafish: 90%; Pig: 81%; Guinea pig: 81%; Rat: 75%; Rabbit: 75%
Protein Families:	Transmembrane



[View online »](#)

**Product images:**

Host: Rabbit; Target Name: WBP1L; Sample Tissue: HeLa Whole Cell lysates; Antibody Dilution: 1.0ug/ml; WBP1L is supported by BioGPS gene expression data to be expressed in HeLa