

Product datasheet for **TA331880**

ZNF692 Rabbit Polyclonal Antibody

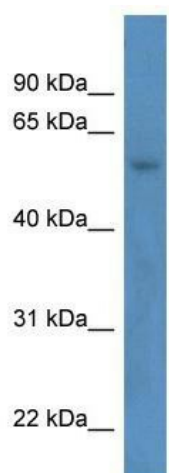
Product data:

Product Type:	Primary Antibodies
Applications:	WB
Recommended Dilution:	WB
Reactivity:	Human
Host:	Rabbit
Isotype:	IgG
Clonality:	Polyclonal
Immunogen:	The immunogen for Anti-ZNF692 Antibody: synthetic peptide directed towards the N terminal of human ZNF692. Synthetic peptide located within the following region: GGHMEQWCLLKERLGFSLHSQAKFLLDRYTSSGCVLCAGPEPLPPKGLQ
Formulation:	Liquid. Purified antibody supplied in 1x PBS buffer with 0.09% (w/v) sodium azide and 2% sucrose.
Conjugation:	Unconjugated
Storage:	Store at -20°C as received.
Stability:	Stable for 12 months from date of receipt.
Predicted Protein Size:	57 kDa
Gene Name:	zinc finger protein 692
Database Link:	NP_060335 Entrez Gene 55657 Human Q9BU19
Background:	ZNF692 may be involved in transcriptional regulation.
Synonyms:	AREBP; Zfp692
Note:	Immunogen sequence homology: Dog: 100%; Pig: 100%; Rat: 100%; Horse: 100%; Human: 100%; Mouse: 100%; Bovine: 100%; Rabbit: 93%; Guinea pig: 93%; Zebrafish: 79%



[View online »](#)

Product images:



WB Suggested Anti-ZNF692 Antibody Titration:
0.2-1 ug/ml; ELISA Titer: 1: 2500; Positive Control:
ACHN cell lysate