

Product datasheet for **TA331879**

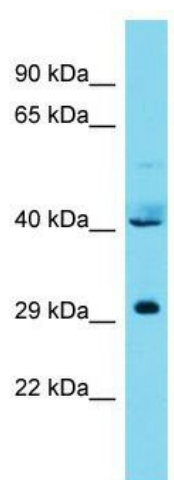
INT11 (CPSF3L) Rabbit Polyclonal Antibody

Product data:

Product Type:	Primary Antibodies
Applications:	WB
Recommended Dilution:	WB
Reactivity:	Human
Host:	Rabbit
Isotype:	IgG
Clonality:	Polyclonal
Immunogen:	The immunogen for Anti-CPSF3L Antibody is: synthetic peptide directed towards the C-terminal region of Human CPSF3L. Synthetic peptide located within the following region: TESTYATTIRDSKRCRERDFLKKVHETVERGGKGAHEPEGAHLLLHGADR
Formulation:	Liquid. Purified antibody supplied in 1x PBS buffer with 0.09% (w/v) sodium azide and 2% sucrose. <i>Note that this product is shipped as lyophilized powder to China customers.</i>
Conjugation:	Unconjugated
Storage:	Store at -20°C as received.
Stability:	Stable for 12 months from date of receipt.
Predicted Protein Size:	30 kDa
Gene Name:	cleavage and polyadenylation specific factor 3-like
Database Link:	NP_060341 Entrez Gene 54973 Human Q5TA45
Background:	The function of this protein remains unknown.
Synonyms:	CPSF73L; INT11; INTS11; RC-68; RC68
Note:	Immunogen sequence homology: Dog: 100%; Pig: 100%; Rat: 100%; Horse: 100%; Human: 100%; Mouse: 100%; Bovine: 100%; Zebrafish: 100%; Guinea pig: 100%; Goat: 77%



[View online »](#)

Product images:

Host: Rabbit; Target Name: CPSF3L; Sample Tissue: 721_B Whole Cell lysates; Antibody Dilution: 1.0ug/ml