

Product datasheet for **TA331877**

HIF1AN Rabbit Polyclonal Antibody

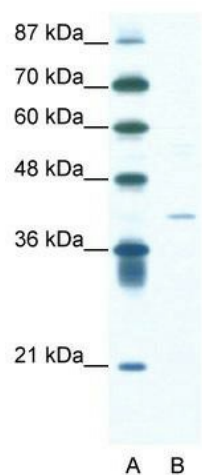
Product data:

Product Type:	Primary Antibodies
Applications:	WB
Recommended Dilution:	WB
Reactivity:	Human
Host:	Rabbit
Isotype:	IgG
Clonality:	Polyclonal
Immunogen:	The immunogen for Anti-HIF1AN Antibody: synthetic peptide directed towards the N terminal of human HIF1AN. Synthetic peptide located within the following region: EAGALGPAWDESQLRSYSFPTRPIPRLSQSDPRAEELIENEPEVLTDTN
Formulation:	Liquid. Purified antibody supplied in 1x PBS buffer with 0.09% (w/v) sodium azide and 2% sucrose. <i>Note that this product is shipped as lyophilized powder to China customers.</i>
Conjugation:	Unconjugated
Storage:	Store at -20°C as received.
Stability:	Stable for 12 months from date of receipt.
Predicted Protein Size:	40 kDa
Gene Name:	hypoxia inducible factor 1 alpha subunit inhibitor
Database Link:	NP_060372 Entrez Gene 55662 Human Q9NWT6
Background:	HIF1AN is a co-repressor that interacts with hypoxia-inducible factor 1 (HIF-1) alpha and the von Hippel-Lindau tumor suppressor protein to mediate repression of HIF-1 transcriptional activity.
Synonyms:	FIH1
Note:	Immunogen sequence homology: Dog: 100%; Pig: 100%; Rat: 100%; Human: 100%; Mouse: 100%; Bovine: 100%; Rabbit: 100%; Guinea pig: 100%; Horse: 93%
Protein Families:	Druggable Genome



[View online »](#)

Product images:



WB Suggested Anti-HIF1AN Antibody Titration:
1.25ug/ml; ELISA Titer: 1: 1562500; Positive
Control: Jurkat cell lysate