

Product datasheet for **TA331876**

C12orf48 (PARPBP) Rabbit Polyclonal Antibody

Product data:

Product Type:	Primary Antibodies
Applications:	WB
Recommended Dilution:	WB
Reactivity:	Human
Host:	Rabbit
Isotype:	IgG
Clonality:	Polyclonal
Immunogen:	The immunogen for Anti-PARPBP Antibody is: synthetic peptide directed towards the C-terminal region of Human PARPBP. Synthetic peptide located within the following region: YMENDLSEGVNPSVGRSTIGTSFGNVHLDRSKNEKVSrkSTSQTGNKSSK
Formulation:	Liquid. Purified antibody supplied in 1x PBS buffer with 0.09% (w/v) sodium azide and 2% sucrose. <i>Note that this product is shipped as lyophilized powder to China customers.</i>
Purification:	Affinity Purified
Conjugation:	Unconjugated
Storage:	Store at -20°C as received.
Stability:	Stable for 12 months from date of receipt.
Predicted Protein Size:	32 kDa
Gene Name:	PARP1 binding protein
Database Link:	NP_060385 Entrez Gene 55010 Human Q9NWS1
Background:	PARPBP is required to suppress inappropriate homologous recombination, thereby playing a central role DNA repair and in the maintenance of genomic stability. PARPBP antagonizes homologous recombination by interfering with the formation of the RAD51-DNA homologous recombination structure. It binds single-strand DNA and poly(A) homopolymers and positively regulate the poly(ADP-ribosyl)ation activity of PARP1; however such function may be indirect.



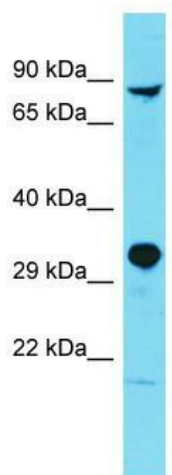
[View online »](#)

Synonyms: AROM; C12orf48; PARI

Note: Immunogen sequence homology: Human: 100%; Rat: 93%; Pig: 92%; Rabbit: 86%; Horse: 85%

Protein Families: Druggable Genome

Product images:



Host: Rabbit; Target Name: PARPBP; Sample Tissue: Fetal Heart lysates; Antibody Dilution: 1.0ug/ml