

## Product datasheet for **TA331873**

### PRPF38B Rabbit Polyclonal Antibody

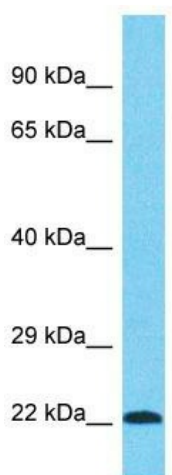
#### Product data:

Product Type:	Primary Antibodies
Applications:	WB
Recommended Dilution:	WB
Reactivity:	Human
Host:	Rabbit
Isotype:	IgG
Clonality:	Polyclonal
Immunogen:	The immunogen for Anti-PRPF38B Antibody is: synthetic peptide directed towards the middle region of Human PRPF38B. Synthetic peptide located within the following region: VQLYELKTYHEVVDEIYFKVTHVEPWEEKSRKTAGQTMCGGVRGVGTGG
Formulation:	Liquid. Purified antibody supplied in 1x PBS buffer with 0.09% (w/v) sodium azide and 2% sucrose. <i>Note that this product is shipped as lyophilized powder to China customers.</i>
Conjugation:	Unconjugated
Storage:	Store at -20°C as received.
Stability:	Stable for 12 months from date of receipt.
Predicted Protein Size:	20 kDa
Gene Name:	pre-mRNA processing factor 38B
Database Link:	<a href="#">NP_060531</a> <a href="#">Entrez Gene 55119 Human</a> <a href="#">Q5VTL8</a>
Background:	PRPF38B may be required for pre-mRNA splicing.
Synonyms:	NET1
Note:	Immunogen sequence homology: Dog: 100%; Pig: 100%; Rat: 100%; Horse: 100%; Human: 100%; Mouse: 100%; Bovine: 100%; Rabbit: 100%; Zebrafish: 100%; Guinea pig: 100%
Protein Pathways:	Spliceosome



[View online »](#)

## Product images:



Host: Rabbit  
Target Name: PRPF38B  
Sample Tissue: HCT15 Cell Lysate  
Antibody Dilution: 1.0 $\mu$ g/ml

Host: Rabbit; Target Name: PRPF38B; Sample  
Tissue: HCT15 Whole Cell lysates; Antibody  
Dilution: 1.0 $\mu$ g/ml