

Product datasheet for **TA331871**

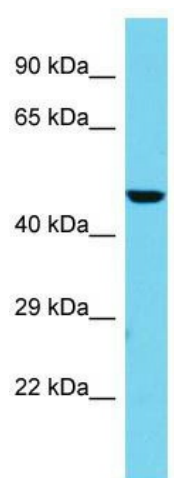
EXD2 Rabbit Polyclonal Antibody

Product data:

Product Type:	Primary Antibodies
Applications:	WB
Recommended Dilution:	WB
Reactivity:	Human
Host:	Rabbit
Isotype:	IgG
Clonality:	Polyclonal
Immunogen:	The immunogen for Anti-EXD2 Antibody is: synthetic peptide directed towards the middle region of Human EXD2. Synthetic peptide located within the following region: NGEATESQQKPRNKKSKMDGMVPGNHQGRDPRKHKRKPLGVGYARKSPL
Formulation:	Liquid. Purified antibody supplied in 1x PBS buffer with 0.09% (w/v) sodium azide and 2% sucrose. <i>Note that this product is shipped as lyophilized powder to China customers.</i>
Conjugation:	Unconjugated
Storage:	Store at -20°C as received.
Stability:	Stable for 12 months from date of receipt.
Predicted Protein Size:	55 kDa
Gene Name:	exonuclease 3'-5' domain containing 2
Database Link:	NP_060669 Entrez Gene 55218 Human Q9NVH0
Background:	The function of this protein remains unknown.
Synonyms:	C14orf114; EXDL2
Note:	Immunogen sequence homology: Rat: 100%; Horse: 100%; Human: 100%; Bovine: 93%; Pig: 92%; Guinea pig: 92%; Dog: 86%; Rabbit: 85%



[View online »](#)

Product images:

Host: Rabbit; Target Name: EXD2; Sample Tissue: HepG2 Whole Cell lysates; Antibody Dilution: 1.0ug/ml