

Product datasheet for **TA331867**

RNF121 Rabbit Polyclonal Antibody

Product data:

Product Type:	Primary Antibodies
Applications:	WB
Recommended Dilution:	WB
Reactivity:	Human
Host:	Rabbit
Isotype:	IgG
Clonality:	Polyclonal
Immunogen:	The immunogen for Anti-RNF121 Antibody: synthetic peptide directed towards the middle region of human RNF121. Synthetic peptide located within the following region: GMPTKHLSDSVCAVCGQQIFVDVSEEGIIENTYRLSCNHVFHEFCIRGWC
Formulation:	Liquid. Purified antibody supplied in 1x PBS buffer with 0.09% (w/v) sodium azide and 2% sucrose.
Conjugation:	Unconjugated
Storage:	Store at -20°C as received.
Stability:	Stable for 12 months from date of receipt.
Predicted Protein Size:	38 kDa
Gene Name:	ring finger protein 121
Database Link:	NP_060790 Entrez Gene 55298 Human Q9H920
Background:	The protein contains a RING finger, a motif present in a variety of functionally distinct proteins and known to be involved in protein-protein and protein-DNA interactions. The protein encoded by this gene contains a RING finger, a motif present in a variety of functionally distinct proteins and known to be involved in protein-protein and protein-DNA interactions. Multiple alternatively spliced transcript variants encoding distinct isoforms have been reported. Three of them are supported by at least two independent transcripts or ESTs, the full length natures of others are not clear.
Synonyms:	FLJ11099

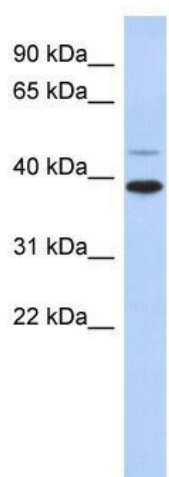


[View online »](#)

Note: Immunogen sequence homology: Dog: 100%; Pig: 100%; Rat: 100%; Horse: 100%; Human: 100%; Bovine: 100%; Rabbit: 100%; Guinea pig: 100%; Mouse: 93%; Zebrafish: 85%

Protein Families: Druggable Genome, Transmembrane

Product images:



WB Suggested Anti-RNF121 Antibody Titration:
0.2-1 ug/ml; ELISA Titer: 1: 2500; Positive Control:
Human Thymus