

Product datasheet for **TA331865**

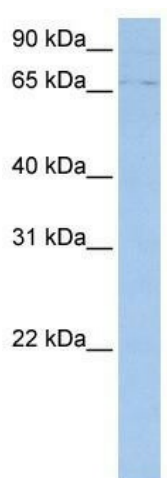
ABCF3 Rabbit Polyclonal Antibody

Product data:

Product Type:	Primary Antibodies
Applications:	WB
Recommended Dilution:	WB
Reactivity:	Human
Host:	Rabbit
Isotype:	IgG
Clonality:	Polyclonal
Immunogen:	The immunogen for Anti-ABCF3 Antibody: synthetic peptide directed towards the N terminal of human ABCF3. Synthetic peptide located within the following region: DDLVEAVGELLQEVS GDSKDDAGIRAVCQRMYNTRLRLAEPQSQGNSQVLL
Formulation:	Liquid. Purified antibody supplied in 1x PBS buffer with 0.09% (w/v) sodium azide and 2% sucrose. <i>Note that this product is shipped as lyophilized powder to China customers.</i>
Conjugation:	Unconjugated
Storage:	Store at -20°C as received.
Stability:	Stable for 12 months from date of receipt.
Predicted Protein Size:	78 kDa
Gene Name:	ATP binding cassette subfamily F member 3
Database Link:	NP_060828 Entrez Gene 55324 Human Q9NUQ8
Background:	ABCF3 belongs to the ABC transporter family, EF3 subfamily. It contains 2 ABC transporter domains. The exact function of ABCF3 remains unknown.
Synonyms:	EST201864
Note:	Immunogen sequence homology: Dog: 100%; Pig: 100%; Rat: 100%; Horse: 100%; Human: 100%; Mouse: 100%; Bovine: 100%; Rabbit: 100%; Guinea pig: 100%
Protein Families:	Druggable Genome



[View online »](#)

Product images:

WB Suggested Anti-ABCF3 Antibody Titration: 0.2-1 ug/ml; Positive Control: MCF7 cell lysate; ABCF3 is supported by BioGPS gene expression data to be expressed in MCF7