

Product datasheet for **TA331863**

DEPDC1B Rabbit Polyclonal Antibody

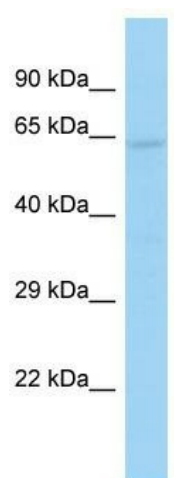
Product data:

Product Type:	Primary Antibodies
Applications:	WB
Recommended Dilution:	WB
Reactivity:	Human
Host:	Rabbit
Isotype:	IgG
Clonality:	Polyclonal
Immunogen:	The immunogen for Anti-DEPDC1B Antibody is: synthetic peptide directed towards the N-terminal region of Human DEPDC1B. Synthetic peptide located within the following region: FGPEVTRKQTVQLLKKFLKNHVEDIKGKWGEEDFEDNRHLYRFPSSPL
Formulation:	Liquid. Purified antibody supplied in 1x PBS buffer with 0.09% (w/v) sodium azide and 2% sucrose. <i>Note that this product is shipped as lyophilized powder to China customers.</i>
Conjugation:	Unconjugated
Storage:	Store at -20°C as received.
Stability:	Stable for 12 months from date of receipt.
Predicted Protein Size:	58 kDa
Gene Name:	DEP domain containing 1B
Database Link:	NP_060839 Entrez Gene 55789 Human Q8WUY9
Background:	The function of this protein remains unknown.
Synonyms:	BRCC3; XTP1
Note:	Immunogen sequence homology: Human: 100%; Dog: 93%; Pig: 93%; Rat: 93%; Horse: 93%; Mouse: 93%; Bovine: 93%; Guinea pig: 93%; Rabbit: 86%



[View online »](#)

Product images:



Host: Rabbit; Target Name: DEPDC1B; Sample
Tissue: 293T Whole Cell lysates; Antibody
Dilution: 1.0ug/ml