

Product datasheet for **TA331858**

SOX18 Rabbit Polyclonal Antibody

Product data:

Product Type:	Primary Antibodies
Applications:	IF, IHC, WB
Recommended Dilution:	IF, WB, IHC
Reactivity:	Human, Mouse
Host:	Rabbit
Isotype:	IgG
Clonality:	Polyclonal
Immunogen:	The immunogen for Anti-SOX18 Antibody: synthetic peptide directed towards the middle region of human SOX18. Synthetic peptide located within the following region: RTAPPAAPLAGLYYGTGTGTPGPYPGPLSPPPEAPPLESAEPLGPAADLWA
Formulation:	Liquid. Purified antibody supplied in 1x PBS buffer with 0.09% (w/v) sodium azide and 2% sucrose. <i>Note that this product is shipped as lyophilized powder to China customers.</i>
Purification:	Affinity Purified
Conjugation:	Unconjugated
Storage:	Store at -20°C as received.
Stability:	Stable for 12 months from date of receipt.
Predicted Protein Size:	41 kDa
Gene Name:	SRY-box 18
Database Link:	NP_060889 Entrez Gene 20672 Mouse Entrez Gene 54345 Human P35713
Background:	SOX18 is a member of the SOX (SRY-related HMG-box) family of transcription factors involved in the regulation of embryonic development and in the determination of the cell fate. The encoded protein may act as a transcriptional regulator after forming a protein complex with other proteins. This protein plays a role in hair, blood vessel, and lymphatic vessel development. Mutations in this gene have been associated with recessive and dominant forms of hypotrichosis-lymphedema-telangiectasia.



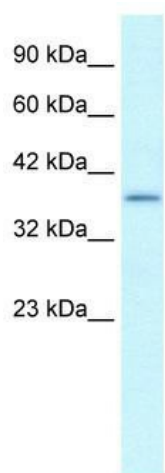
[View online »](#)

Synonyms: HLTRS; HLTS

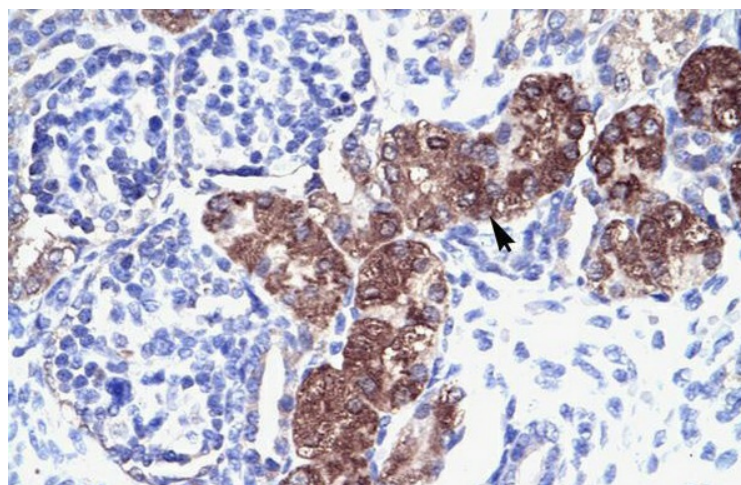
Note: Immunogen sequence homology: Pig: 100%; Rat: 100%; Human: 100%; Mouse: 100%; Guinea pig: 100%; Bovine: 86%

Protein Families: Transcription Factors

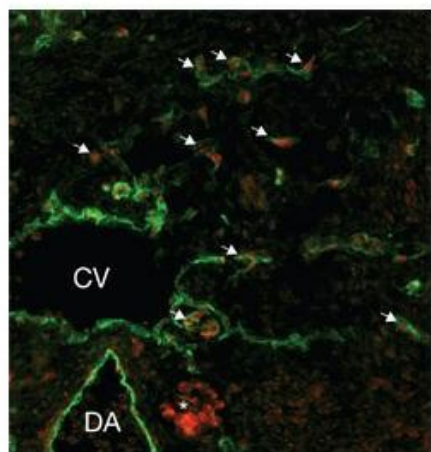
Product images:



WB Suggested Anti-SOX18 Antibody Titration: 0.2-1 ug/ml; Positive Control: Human heart



Rabbit Anti-SOX18 Antibody; Paraffin Embedded Tissue: Human Kidney; Cellular Data: Epithelial cells of renal tubule; Antibody Concentration: 4.0-8.0 ug/ml; Magnification: 400X



lymphatic endothelial cell tissue and primary
(1/50 up to 1/500) secondary 1/200