

Product datasheet for **TA331857**

RNF130 Rabbit Polyclonal Antibody

Product data:

Product Type:	Primary Antibodies
Applications:	WB
Recommended Dilution:	WB
Reactivity:	Human
Host:	Rabbit
Isotype:	IgG
Clonality:	Polyclonal
Immunogen:	The immunogen for Anti-RNF130 Antibody: synthetic peptide directed towards the N terminal of human RNF130. Synthetic peptide located within the following region: QEPGRGAPLTFRIDRGRYGLDSPKAEVRGQVLAPLPLHGVADHLGCDPQT
Formulation:	Liquid. Purified antibody supplied in 1x PBS buffer with 0.09% (w/v) sodium azide and 2% sucrose. <i>Note that this product is shipped as lyophilized powder to China customers.</i>
Conjugation:	Unconjugated
Storage:	Store at -20°C as received.
Stability:	Stable for 12 months from date of receipt.
Predicted Protein Size:	46 kDa
Gene Name:	ring finger protein 130
Database Link:	NP_060904 Entrez Gene 55819 Human Q86XS8
Background:	RNF130 contains a RING finger motif and is similar to g1, a Drosophila zinc-finger protein that is expressed in mesoderm and involved in embryonic development. The expression of the mouse counterpart was found to be upregulated in myeloblastic cells following IL3 deprivation, suggesting that this gene may regulate growth factor withdrawal-induced apoptosis of myeloid precursor cells.
Synonyms:	G1RZFP; GOLIATH; GP

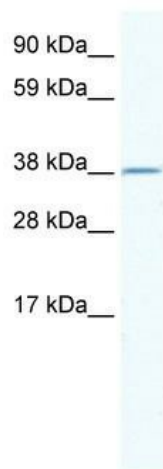


[View online »](#)

Note: Immunogen sequence homology: Rat: 100%; Human: 100%; Mouse: 100%; Bovine: 100%; Rabbit: 100%

Protein Families: Druggable Genome, Transmembrane

Product images:



WB Suggested Anti-RNF130 Antibody Titration:
2.5ug/ml; Positive Control: Human Thymus