

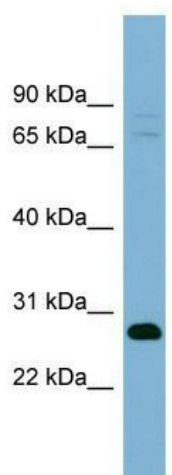
Product datasheet for **TA331856**

TMEM176A Rabbit Polyclonal Antibody

Product data:

| | |
|-------------------------|---|
| Product Type: | Primary Antibodies |
| Applications: | WB |
| Recommended Dilution: | WB |
| Reactivity: | Human |
| Host: | Rabbit |
| Isotype: | IgG |
| Clonality: | Polyclonal |
| Immunogen: | The immunogen for Anti-TMEM176A Antibody: synthetic peptide directed towards the middle region of human TMEM176A. Synthetic peptide located within the following region: GYSYNSACRISSSSDWNTPTQSPPEVRRLLHCTSFMDMLKALFRTLQ |
| Formulation: | Liquid. Purified antibody supplied in 1x PBS buffer with 0.09% (w/v) sodium azide and 2% sucrose. |
| Conjugation: | Unconjugated |
| Storage: | Store at -20°C as received. |
| Stability: | Stable for 12 months from date of receipt. |
| Predicted Protein Size: | 26 kDa |
| Gene Name: | transmembrane protein 176A |
| Database Link: | NP_060957 Entrez Gene 55365 Human Q96HP8 |
| Background: | The function of this protein remains unknown. |
| Synonyms: | GS188; HCA112; MS4B1 |
| Note: | Immunogen sequence homology: Human: 100%; Horse: 79% |
| Protein Families: | Transmembrane |


[View online »](#)

Product images:

WB Suggested Anti-TMEM176A Antibody
Titration: 0.2-1 ug/ml; Positive Control: Human
Stomach