

Product datasheet for **TA331854**

YOD1 Rabbit Polyclonal Antibody

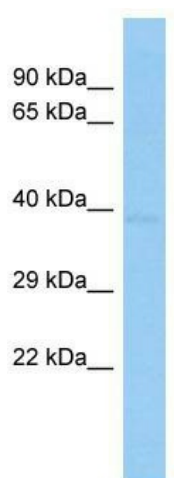
Product data:

Product Type:	Primary Antibodies
Applications:	WB
Recommended Dilution:	WB
Reactivity:	Human
Host:	Rabbit
Isotype:	IgG
Clonality:	Polyclonal
Immunogen:	The immunogen for Anti-YOD1 Antibody is: synthetic peptide directed towards the C-terminal region of Human YOD1. Synthetic peptide located within the following region: ELADEARRRRQFTDVNRFTLRMCVCQKGLTGQAEAREHAKETGHTNFGEV
Formulation:	Liquid. Purified antibody supplied in 1x PBS buffer with 0.09% (w/v) sodium azide and 2% sucrose. <i>Note that this product is shipped as lyophilized powder to China customers.</i>
Conjugation:	Unconjugated
Storage:	Store at -20°C as received.
Stability:	Stable for 12 months from date of receipt.
Predicted Protein Size:	38 kDa
Gene Name:	YOD1 deubiquitinase
Database Link:	NP_061036 Entrez Gene 55432 Human Q5VVQ6
Background:	Deubiquitinating enzymes are proteases that specifically cleave ubiquitin linkages, negating the action of ubiquitin ligases. DUBA8 belongs to a DUB subfamily characterized by an ovarian tumor (OTU) domain.
Synonyms:	DUBA8; OTUD2; PRO0907
Note:	Immunogen sequence homology: Pig: 100%; Rat: 100%; Human: 100%; Rabbit: 100%; Guinea pig: 100%; Dog: 93%; Horse: 93%; Bovine: 93%; Zebrafish: 93%; Mouse: 86%
Protein Pathways:	Biosynthesis of unsaturated fatty acids, Limonene and pinene degradation



[View online »](#)

Product images:



Host: Rabbit; Target Name: YOD1; Sample Tissue: Placenta lysates; Antibody Dilution: 1.0ug/ml