

Product datasheet for **TA331853**

HES6 Rabbit Polyclonal Antibody

Product data:

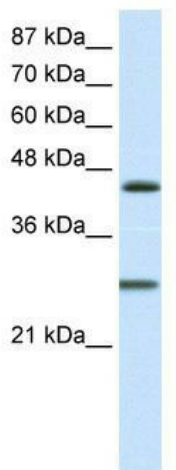
| | |
|-------------------------|--|
| Product Type: | Primary Antibodies |
| Applications: | IHC, WB |
| Recommended Dilution: | WB, IHC |
| Reactivity: | Human |
| Host: | Rabbit |
| Isotype: | IgG |
| Clonality: | Polyclonal |
| Immunogen: | The immunogen for Anti-HES6 Antibody: synthetic peptide directed towards the C terminal of human HES6. Synthetic peptide located within the following region: PPGPGDDLCSDL EEAPEAELSQAPAEGPDLVPAALGSLTTA QIARSVWRP |
| Formulation: | Liquid. Purified antibody supplied in 1x PBS buffer with 0.09% (w/v) sodium azide and 2% sucrose. <i>Note that this product is shipped as lyophilized powder to China customers.</i> |
| Conjugation: | Unconjugated |
| Storage: | Store at -20°C as received. |
| Stability: | Stable for 12 months from date of receipt. |
| Predicted Protein Size: | 25 kDa |
| Gene Name: | hes family bHLH transcription factor 6 |
| Database Link: | NP_061115 Entrez Gene 55502 Human Q96HZ4 |
| Background: | HES6 belongs to a subfamily of basic helix-loop-helix transcription factors that includes Drosophila Hairy and Enhancer of split genes. Like other members of the family, HES6 features the WRPW motif which is consisted just of four amino acids at its C-terminus. It is expressed by both undifferentiated and differentiated cells and is an inhibitor of Hes1. HES6 supports Mash1 activity and promotes cell differentiation. |
| Synonyms: | bHLHb41; bHLHc23; C-HAIRY1; HES-6 |
| Note: | Immunogen sequence homology: Human: 100%; Dog: 86%; Rat: 86%; Mouse: 79% |



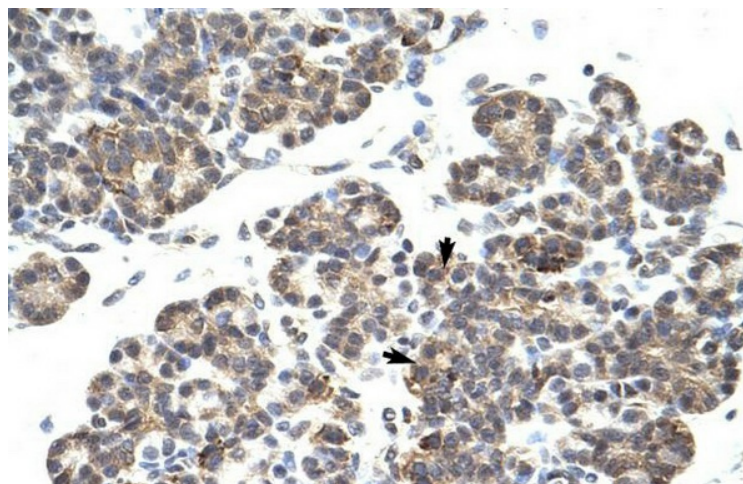
[View online »](#)

Protein Families: Druggable Genome, Transcription Factors

Product images:



WB Suggested Anti-HES6 Antibody Titration: 1.25ug/ml; Positive Control: Transfected 293T



Human Pancreas