

Product datasheet for **TA331848**

ABCA5 Rabbit Polyclonal Antibody

Product data:

Product Type:	Primary Antibodies
Applications:	IHC, WB
Recommended Dilution:	WB, IHC
Reactivity:	Human
Host:	Rabbit
Isotype:	IgG
Clonality:	Polyclonal
Immunogen:	The immunogen for Anti-ABCA5 Antibody: synthetic peptide directed towards the C terminal of human ABCA5. Synthetic peptide located within the following region: HKEYDDKKDFLLSRKVKKVKATKYISFCVKKGEILGLLGPNAGKSTIINI
Formulation:	Liquid. Purified antibody supplied in 1x PBS buffer with 0.09% (w/v) sodium azide and 2% sucrose. <i>Note that this product is shipped as lyophilized powder to China customers.</i>
Conjugation:	Unconjugated
Storage:	Store at -20°C as received.
Stability:	Stable for 12 months from date of receipt.
Predicted Protein Size:	186 kDa
Gene Name:	ATP binding cassette subfamily A member 5
Database Link:	NP_061142 Entrez Gene 23461 Human Q8WWZ7



[View online »](#)

Background:

The membrane-associated protein ABCA5 is a member of the superfamily of ATP-binding cassette (ABC) transporters. ABC proteins transport various molecules across extra- and intracellular membranes. ABC genes are divided into seven distinct subfamilies (ABC1, MDR/TAP, MRP, ALD, OABP, GCN20, and White). ABCA5 is a member of the ABC1 subfamily. Members of the ABC1 subfamily comprise the only major ABC subfamily found exclusively in multicellular eukaryotes. This gene is clustered among 4 other ABC1 family members on 17q24, but neither the substrate nor the function of this gene is known. Alternative splicing of this gene results in several transcript variants; however, not all variants have been fully described. The membrane-associated protein encoded by this gene is a member of the superfamily of ATP-binding cassette (ABC) transporters. ABC proteins transport various molecules across extra- and intracellular membranes. ABC genes are divided into seven distinct subfamilies (ABC1, MDR/TAP, MRP, ALD, OABP, GCN20, and White). This encoded protein is a member of the ABC1 subfamily. Members of the ABC1 subfamily comprise the only major ABC subfamily found exclusively in multicellular eukaryotes. This gene is clustered among 4 other ABC1 family members on 17q24, but neither the substrate nor the function of this gene is known. Alternative splicing of this gene results in several transcript variants; however, not all variants have been fully described.

Synonyms:

ABC13; EST90625

Note:

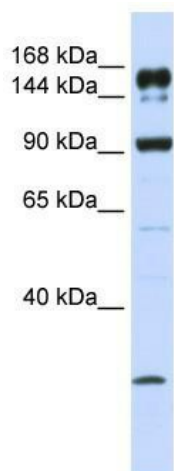
Immunogen sequence homology: Human: 100%; Rat: 93%; Mouse: 93%; Dog: 86%; Horse: 86%; Rabbit: 86%; Bovine: 79%

Protein Families:

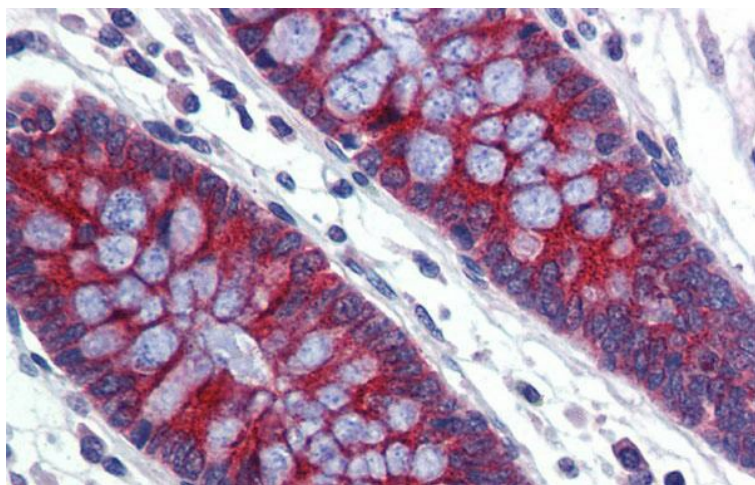
Druggable Genome, Transmembrane

Protein Pathways:

ABC transporters

Product images:

WB Suggested Anti-ABCA5 Antibody Titration: 1 ug/ml; Positive Control: MCF-7 whole cell lysates



Immunohistochemistry with Human Colon lysate tissue at an antibody concentration of 5.0ug/ml using anti-ABCA5 antibody