

## Product datasheet for **TA331846**

### CTTNBP2NL Rabbit Polyclonal Antibody

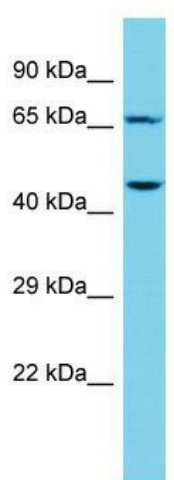
#### Product data:

Product Type:	Primary Antibodies
Applications:	WB
Recommended Dilution:	WB
Reactivity:	Human
Host:	Rabbit
Isotype:	IgG
Clonality:	Polyclonal
Immunogen:	The immunogen for Anti-CTTNBP2NL Antibody is: synthetic peptide directed towards the N-terminal region of Human CTTNBP2NL. Synthetic peptide located within the following region: LEEERQRHAQDTAEGDDVTYMLEKERERLTQQLEFEKSQVKKFEKEQKKL
Formulation:	Liquid. Purified antibody supplied in 1x PBS buffer with 0.09% (w/v) sodium azide and 2% sucrose. <i>Note that this product is shipped as lyophilized powder to China customers.</i>
Conjugation:	Unconjugated
Storage:	Store at -20°C as received.
Stability:	Stable for 12 months from date of receipt.
Predicted Protein Size:	70 kDa
Gene Name:	CTTNBP2 N-terminal like
Database Link:	<a href="#">NP_061174</a> <a href="#">Entrez Gene 55917 Human Q9P2B4</a>
Background:	The function of this protein remains unknown.
Synonyms:	DKFZp547A023; FLJ13278
Note:	Immunogen sequence homology: Dog: 100%; Pig: 100%; Rat: 100%; Horse: 100%; Human: 100%; Mouse: 100%; Bovine: 100%; Rabbit: 100%; Guinea pig: 100%



[View online »](#)

## Product images:



Host: Rabbit; Target Name: CTTNBP2NL; Sample  
Tissue: NCI-H226 Whole Cell lysates; Antibody  
Dilution: 1.0ug/ml