

## Product datasheet for **TA331843**

### TAS2R5 Rabbit Polyclonal Antibody

#### Product data:

Product Type:	Primary Antibodies
Applications:	WB
Recommended Dilution:	WB
Reactivity:	Human
Host:	Rabbit
Isotype:	IgG
Clonality:	Polyclonal
Immunogen:	The immunogen for Anti-TAS2R5 Antibody is: synthetic peptide directed towards the C-terminal region of Human TAS2R5. Synthetic peptide located within the following region: SWQYLYAFQLNSGSYLPLVFLVSSGMLIVSLYTHHKMKVHSAGRRDVR
Formulation:	Liquid. Purified antibody supplied in 1x PBS buffer with 0.09% (w/v) sodium azide and 2% sucrose. <i>Note that this product is shipped as lyophilized powder to China customers.</i>
Conjugation:	Unconjugated
Storage:	Store at -20°C as received.
Stability:	Stable for 12 months from date of receipt.
Predicted Protein Size:	33 kDa
Gene Name:	taste 2 receptor member 5
Database Link:	<a href="#">NP_061853</a> <a href="#">Entrez Gene 54429 Human</a> <a href="#">Q9NYW4</a>
Background:	This gene encodes a bitter taste receptor; bitter taste receptors are members of the G protein-coupled receptor superfamily and are specifically expressed by taste receptor cells of the tongue and palate epithelia. Each of these apparently intronless taste receptor genes encodes a 7-transmembrane receptor protein, functioning as a bitter taste receptor. This gene is clustered with another 3 candidate taste receptor genes on chromosome 7 and is genetically linked to loci that influence bitter perception.
Synonyms:	T2R5



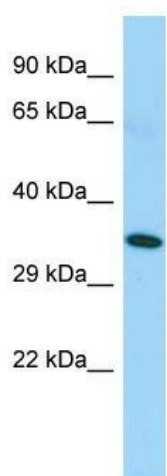
[View online »](#)

**Note:** Immunogen sequence homology: Human: 100%; Dog: 83%

**Protein Families:** Druggable Genome, Transmembrane

**Protein Pathways:** Taste transduction

**Product images:**



Host: Rabbit; Target Name: TAS2R5; Sample Tissue: Fetal Lung lysates; Antibody Dilution: 1.0ug/ml