

Product datasheet for **TA331842**

PEPP2 (PLEKHA5) Rabbit Polyclonal Antibody

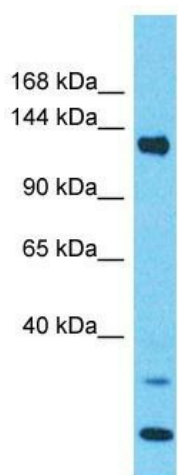
Product data:

Product Type:	Primary Antibodies
Applications:	WB
Recommended Dilution:	WB
Reactivity:	Human
Host:	Rabbit
Isotype:	IgG
Clonality:	Polyclonal
Immunogen:	The immunogen for Anti-PLEKHA5 Antibody is: synthetic peptide directed towards the C-terminal region of Human PLEKHA5. Synthetic peptide located within the following region: ASDQSPLQSPSNLRDNPFRRTTQTRRRDDKELDTAIRENDVKPDHETPATE
Formulation:	Liquid. Purified antibody supplied in 1x PBS buffer with 0.09% (w/v) sodium azide and 2% sucrose. <i>Note that this product is shipped as lyophilized powder to China customers.</i>
Conjugation:	Unconjugated
Storage:	Store at -20°C as received.
Stability:	Stable for 12 months from date of receipt.
Predicted Protein Size:	146 kDa
Gene Name:	pleckstrin homology domain containing A5
Database Link:	NP_061885 Entrez Gene 54477 Human Q9HAU0
Background:	The function of this protein remains unknown.
Synonyms:	PEPP-2; PEPP2
Note:	Immunogen sequence homology: Human: 100%; Mouse: 92%; Dog: 86%



[View online »](#)

Product images:



Host: Rabbit
Target Name: PLEKHA5
Sample Tissue: NCI-H226 Cell Lysate
Antibody Dilution: 1.0 μ g/ml

Host: Rabbit; Target Name: PLEKHA5; Sample Tissue: NCI-H226 Whole Cell lysates; Antibody Dilution: 1.0 μ g/ml