

## Product datasheet for **TA331840**

### Hes6 Rabbit Polyclonal Antibody

#### Product data:

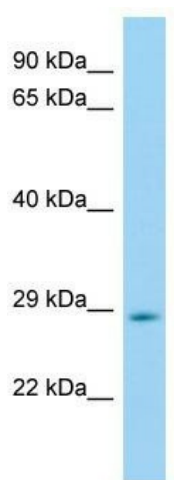
Product Type:	Primary Antibodies
Applications:	WB
Recommended Dilution:	WB
Reactivity:	Mouse
Host:	Rabbit
Isotype:	IgG
Clonality:	Polyclonal
Immunogen:	The immunogen for Anti-Hes6 Antibody is: synthetic peptide directed towards the middle region of Mouse Hes6. Synthetic peptide located within the following region: LLAGTEVQAKLENAEVLLELTVRRVQGALRGRAREREQLQAEASERFAAGY
Formulation:	Liquid. Purified antibody supplied in 1x PBS buffer with 0.09% (w/v) sodium azide and 2% sucrose. <i>Note that this product is shipped as lyophilized powder to China customers.</i>
Conjugation:	Unconjugated
Storage:	Store at -20°C as received.
Stability:	Stable for 12 months from date of receipt.
Predicted Protein Size:	24 kDa
Gene Name:	hairy and enhancer of split 6
Database Link:	<a href="#">NP_062352</a> <a href="#">Entrez Gene 55927 Mouse</a> <a href="#">Q9JHE6</a>
Background:	Hes6 does not bind DNA itself but suppresses both HES1-mediated N box-dependent transcriptional repression and binding of HES1 to E box sequences. Hes6 also suppresses HES1-mediated inhibition of the heterodimer formed by ASCL1/MASH1 and TCF3/E47, allowing ASCL1 and TCF3 to up-regulate transcription in its presence. It promotes cell differentiation.
Synonyms:	bHLHb41; bHLHc23; C-HAIRY1; HES-6



[View online »](#)

**Note:** Immunogen sequence homology: Dog: 100%; Pig: 100%; Rat: 100%; Human: 100%; Mouse: 100%; Bovine: 100%; Guinea pig: 100%; Zebrafish: 92%; Horse: 75%; Rabbit: 75%

**Product images:**



WB Suggested Anti-Hes6 Antibody; Titration: 1.0 ug/ml; Positive Control: Mouse Stomach