

## Product datasheet for **TA331838**

### GPR162 Rabbit Polyclonal Antibody

#### Product data:

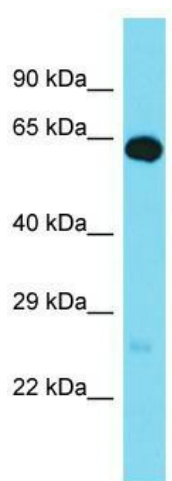
Product Type:	Primary Antibodies
Applications:	WB
Recommended Dilution:	WB
Reactivity:	Human
Host:	Rabbit
Isotype:	IgG
Clonality:	Polyclonal
Immunogen:	The immunogen for Anti-GPR162 Antibody is: synthetic peptide directed towards the N-terminal region of Human GPR162. Synthetic peptide located within the following region: ILSISAKQQKHKPLELLCFLAGTHILMAAVPLTTFVAVQLRRQASSDYD
Formulation:	Liquid. Purified antibody supplied in 1x PBS buffer with 0.09% (w/v) sodium azide and 2% sucrose. <i>Note that this product is shipped as lyophilized powder to China customers.</i>
Conjugation:	Unconjugated
Storage:	Store at -20°C as received.
Stability:	Stable for 12 months from date of receipt.
Predicted Protein Size:	65 kDa
Gene Name:	G protein-coupled receptor 162
Database Link:	<a href="#">NP_062832</a> <a href="#">Entrez Gene 27239 Human</a> <a href="#">Q16538</a>
Background:	This gene was identified upon genomic analysis of a gene-dense region at human chromosome 12p13. It appears to be mainly expressed in the brain; however, its function is not known. Alternatively spliced transcript variants encoding different isoforms have been identified.
Synonyms:	A-2; GRCA
Note:	Immunogen sequence homology: Dog: 100%; Pig: 100%; Rat: 100%; Horse: 100%; Human: 100%; Mouse: 100%; Bovine: 100%; Rabbit: 79%; Zebrafish: 79%



[View online »](#)

Protein Families: Druggable Genome, GPCR, Transmembrane

### Product images:



Host: Rabbit; Target Name: GPR162; Sample Tissue: Fetal Brain lysates; Antibody Dilution: 1.0ug/ml