

## Product datasheet for **TA331837**

### SLC2A4RG Rabbit Polyclonal Antibody

#### Product data:

Product Type:	Primary Antibodies
Applications:	WB
Recommended Dilution:	WB
Reactivity:	Human
Host:	Rabbit
Isotype:	IgG
Clonality:	Polyclonal
Immunogen:	The immunogen for Anti-SLC2A4RG Antibody: synthetic peptide directed towards the middle region of human SLC2A4RG. Synthetic peptide located within the following region: MQRHIRLVHLGRQAEPEQSDGEEDFYTELVDVGVDTLTDGLSSLTPVSPT
Formulation:	Liquid. Purified antibody supplied in 1x PBS buffer with 0.09% (w/v) sodium azide and 2% sucrose. <i>Note that this product is shipped as lyophilized powder to China customers.</i>
Conjugation:	Unconjugated
Storage:	Store at -20°C as received.
Stability:	Stable for 12 months from date of receipt.
Predicted Protein Size:	41 kDa
Gene Name:	SLC2A4 regulator
Database Link:	<a href="#">NP_064446</a> <a href="#">Entrez Gene 56731 Human</a> <a href="#">Q9NR83</a>
Background:	The protein encoded by SLC2A4RG is a nuclear transcription factor involved in the activation of the solute carrier family 2 member 4 gene. The encoded protein interacts with another transcription factor, myocyte enhancer factor 2, to activate transcription of this gene. The protein encoded by this gene is a nuclear transcription factor involved in the activation of the solute carrier family 2 member 4 gene. The encoded protein interacts with another transcription factor, myocyte enhancer factor 2, to activate transcription of this gene.
Synonyms:	GEF; HDBP-1; HDBP1; Si-1-2; Si-1-2-19

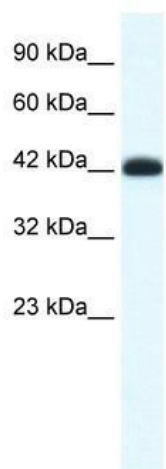


[View online »](#)

**Note:** Immunogen sequence homology: Dog: 100%; Rat: 100%; Human: 100%; Horse: 92%; Bovine: 92%

**Protein Families:** Transcription Factors

**Product images:**



WB Suggested Anti-SLC2A4RG Antibody Titration:  
0.2-1 ug/ml; ELISA Titer: 1: 62500; Positive  
Control: Jurkat cell lysate