

Product datasheet for **TA331836**

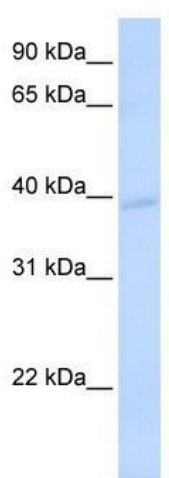
PCMF (KCMF1) Rabbit Polyclonal Antibody

Product data:

Product Type:	Primary Antibodies
Applications:	WB
Recommended Dilution:	WB
Reactivity:	Human
Host:	Rabbit
Isotype:	IgG
Clonality:	Polyclonal
Immunogen:	The immunogen for Anti-KCMF1 Antibody: synthetic peptide directed towards the N terminal of human KCMF1. Synthetic peptide located within the following region: SVEQPQSFTCPYCGKMGYTETSLQEHVTSEHAETSTEVICPICAALPGGD
Formulation:	Liquid. Purified antibody supplied in 1x PBS buffer with 0.09% (w/v) sodium azide and 2% sucrose. <i>Note that this product is shipped as lyophilized powder to China customers.</i>
Conjugation:	Unconjugated
Storage:	Store at -20°C as received.
Stability:	Stable for 12 months from date of receipt.
Predicted Protein Size:	42 kDa
Gene Name:	potassium channel modulatory factor 1
Database Link:	NP_064507 Entrez Gene 56888 Human Q9P0J7
Background:	KCMF1 belongs to the KCMF1 family. It contains 1 C2H2-type zinc finger and 1 ZZ-type zinc finger. It has intrinsic E3 ubiquitin ligase activity and promotes ubiquitination.
Synonyms:	DEBT91; FIGC; PCMF; ZZZ1
Note:	Immunogen sequence homology: Dog: 93%; Pig: 93%; Rat: 93%; Horse: 93%; Human: 93%; Mouse: 93%; Bovine: 93%; Rabbit: 93%; Zebrafish: 93%; Guinea pig: 93%



[View online »](#)

Product images:

WB Suggested Anti-KCMF1 Antibody Titration:
0.2-1 ug/ml; ELISA Titer: 1: 500; Positive Control:
721_B cell lysate KCMF1 is supported by BioGPS
gene expression data to be expressed in 721_B