

Product datasheet for **TA331834**

BBX Rabbit Polyclonal Antibody

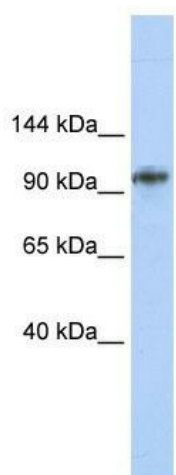
Product data:

Product Type:	Primary Antibodies
Applications:	WB
Recommended Dilution:	WB
Reactivity:	Human
Host:	Rabbit
Isotype:	IgG
Clonality:	Polyclonal
Immunogen:	The immunogen for Anti-BBX Antibody: synthetic peptide directed towards the middle region of human BBX. Synthetic peptide located within the following region: KKTGNVSSEPTKTSKSGDKWSNKQLFLDAIHPTEAIFSEDRNTMEPVHK
Formulation:	Liquid. Purified antibody supplied in 1x PBS buffer with 0.09% (w/v) sodium azide and 2% sucrose. <i>Note that this product is shipped as lyophilized powder to China customers.</i>
Conjugation:	Unconjugated
Storage:	Store at -20°C as received.
Stability:	Stable for 12 months from date of receipt.
Predicted Protein Size:	101 kDa
Gene Name:	bobby sox homolog (Drosophila)
Database Link:	NP_064620 Entrez Gene 56987 Human Q8WY36
Background:	BBX is a transcription factor that is necessary for cell cycle progression from G1 to S phase.
Synonyms:	ARTC1; HBP2; HSPC339; MDS001
Note:	Immunogen sequence homology: Human: 100%; Dog: 93%; Pig: 93%; Rat: 93%; Horse: 93%; Guinea pig: 93%; Mouse: 86%; Bovine: 86%; Rabbit: 86%
Protein Families:	Transcription Factors



[View online »](#)

Product images:



WB Suggested Anti-BBX Antibody Titration: 0.2-1 ug/ml; ELISA Titer: 1: 312500; Positive Control: MCF7 cell lysate