

Product datasheet for **TA331829**

REXO4 Rabbit Polyclonal Antibody

Product data:

Product Type:	Primary Antibodies
Applications:	WB
Recommended Dilution:	WB
Reactivity:	Human
Host:	Rabbit
Isotype:	IgG
Clonality:	Polyclonal
Immunogen:	The immunogen for Anti-REXO4 Antibody: synthetic peptide directed towards the C terminal of human REXO4. Synthetic peptide located within the following region: QYGKCVYDKYVKPTEPVTDYRTAVSGIRPENLKQGEELEVQKEVAEMLK
Formulation:	Liquid. Purified antibody supplied in 1x PBS buffer with 0.09% (w/v) sodium azide and 2% sucrose.
Conjugation:	Unconjugated
Storage:	Store at -20°C as received.
Stability:	Stable for 12 months from date of receipt.
Predicted Protein Size:	47 kDa
Gene Name:	REX4 homolog, 3'-5' exonuclease
Database Link:	NP_065118 Entrez Gene 57109 Human Q9GZR2
Background:	The regulation of the quinone reductase (QR) gene as well as other genes involved in detoxification is known to be mediated by an electrophile response element (EpRE). QR gene regulation by the antiestrogen-occupied estrogen receptor (ER) is mediated by the EpRE-containing region of the human QR gene, and the ER is one of the complex of proteins that binds to the EpRE. REXO4 directly binds to the EpRE and interacts with the ER. The activation of QR gene activity by REXO4 is enhanced in the presence of ER beta.
Synonyms:	REX4; XPMC2; XPMC2H

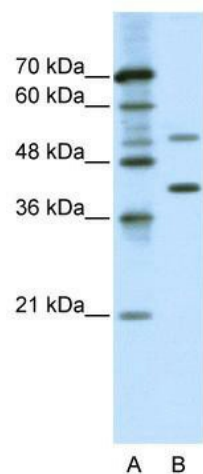


[View online »](#)

Note: Immunogen sequence homology: Dog: 100%; Pig: 100%; Rat: 100%; Human: 100%; Mouse: 100%; Horse: 92%; Zebrafish: 79%; Guinea pig: 79%; Bovine: 77%

Protein Families: Transcription Factors

Product images:



WB Suggested Anti-REXO4 Antibody Titration: 0.2-1 ug/ml; ELISA Titer: 1: 1562500; Positive Control: Jurkat cell lysate