

Product datasheet for **TA331828**

TBX20 Rabbit Polyclonal Antibody

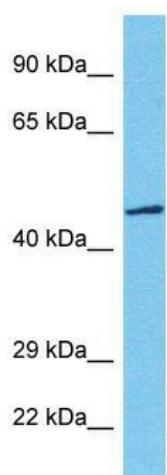
Product data:

Product Type:	Primary Antibodies
Applications:	IHC, WB
Recommended Dilution:	WB, IHC
Reactivity:	Human
Host:	Rabbit
Isotype:	IgG
Clonality:	Polyclonal
Immunogen:	The immunogen for Anti-TBX20 Antibody: synthetic peptide directed towards the N terminal of human TBX20. Synthetic peptide located within the following region: MEFTASPKPQLSSRANAFSIAALMSSGGSKEKEATENTIKPLEQFVEKSS
Formulation:	Liquid. Purified antibody supplied in 1x PBS buffer with 0.09% (w/v) sodium azide and 2% sucrose. <i>Note that this product is shipped as lyophilized powder to China customers.</i>
Conjugation:	Unconjugated
Storage:	Store at -20°C as received.
Stability:	Stable for 12 months from date of receipt.
Predicted Protein Size:	49 kDa
Gene Name:	T-box 20
Database Link:	NP_065150 Entrez Gene 57057 Human Q9UMR3
Background:	TBX20 is a member of the T-box transcription factor family expressed in the developing heart, eye, ventral neural tube, and limbs, indicating a possible role in regulating development of these tissues.
Synonyms:	9430010M06Rik; AL022859; ASD4; T-box 20; Tbx12
Note:	Immunogen sequence homology: Dog: 100%; Pig: 100%; Rat: 100%; Horse: 100%; Human: 100%; Mouse: 100%; Bovine: 100%; Rabbit: 100%; Zebrafish: 100%; Guinea pig: 93%
Protein Families:	Transcription Factors

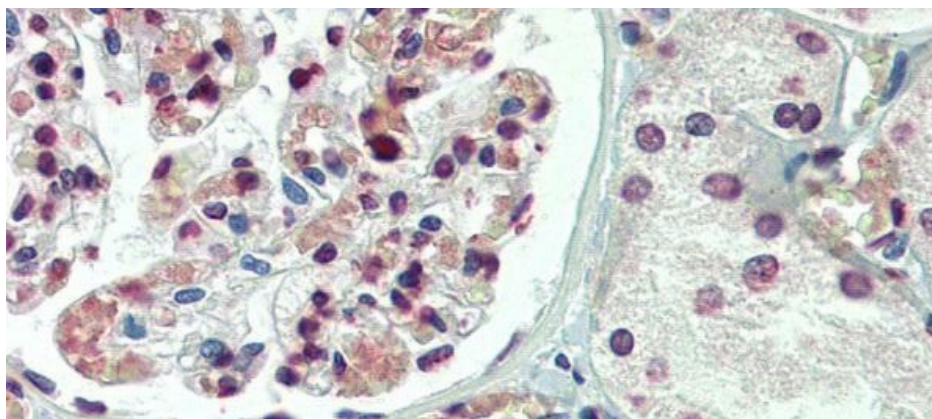


[View online »](#)

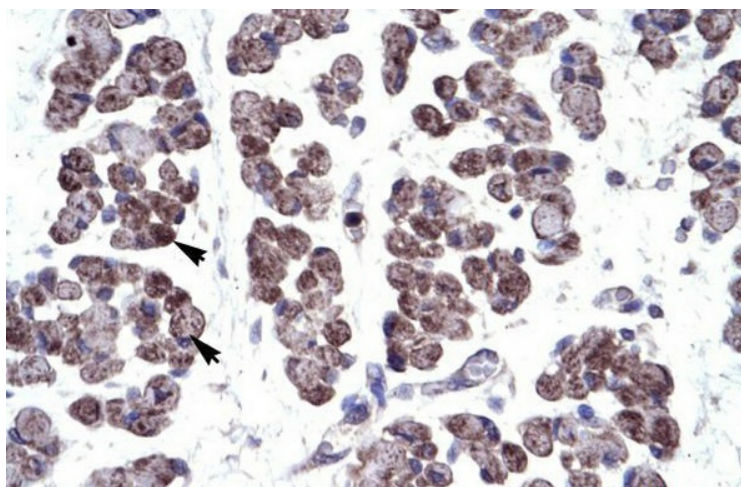
Product images:



Host: Rabbit; Target Name: TBX20; Sample Tissue: Jurkat cell lysates; Antibody Dilution: 1.0ug/ml



Immunohistochemistry with Human kidney lysate tissue at an antibody concentration of 5.0ug/ml using anti-TBX20 antibody



Human Muscle