

Product datasheet for TA331827

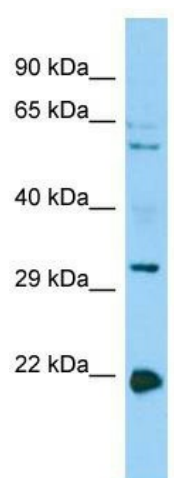
CORO1B Rabbit Polyclonal Antibody

Product data:

| | |
|-------------------------|--|
| Product Type: | Primary Antibodies |
| Applications: | WB |
| Recommended Dilution: | WB |
| Reactivity: | Human |
| Host: | Rabbit |
| Isotype: | IgG |
| Clonality: | Polyclonal |
| Immunogen: | The immunogen for Anti-CORO1B Antibody is: synthetic peptide directed towards the C-terminal region of Human CORO1B. Synthetic peptide located within the following region: STTTAADATPSGSLARAGEAGKLEEVMQELRALRVKEQGDRICRLEEQ |
| Formulation: | Liquid. Purified antibody supplied in 1x PBS buffer with 0.09% (w/v) sodium azide and 2% sucrose. <i>Note that this product is shipped as lyophilized powder to China customers.</i> |
| Conjugation: | Unconjugated |
| Storage: | Store at -20°C as received. |
| Stability: | Stable for 12 months from date of receipt. |
| Predicted Protein Size: | 54 kDa |
| Gene Name: | coronin 1B |
| Database Link: | NP_065174 Entrez Gene 57175 Human Q9BR76 |
| Background: | Members of the coronin family, such as CORO1B, are WD repeat-containing actin-binding proteins that regulate cell motility. |
| Synonyms: | CORONIN-2 |
| Note: | Immunogen sequence homology: Human: 100%; Dog: 86%; Pig: 86%; Rat: 86%; Horse: 86%; Mouse: 86%; Rabbit: 86%; Guinea pig: 86%; Bovine: 79% |



[View online »](#)

Product images:

Host: Rabbit; Target Name: CORO1B; Sample
Tissue: HepG2 Whole Cell lysates; Antibody
Dilution: 1.0ug/ml