

## Product datasheet for **TA331820**

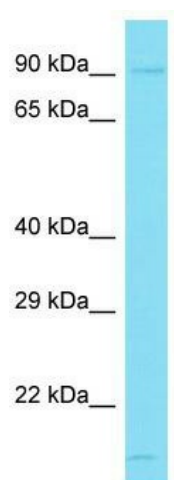
### GRAMD1B Rabbit Polyclonal Antibody

#### Product data:

Product Type:	Primary Antibodies
Applications:	WB
Recommended Dilution:	WB
Reactivity:	Human
Host:	Rabbit
Isotype:	IgG
Clonality:	Polyclonal
Immunogen:	The immunogen for Anti-GRAMD1B Antibody is: synthetic peptide directed towards the N-terminal region of Human GRAMD1B. Synthetic peptide located within the following region: SDHSSDKSPSTPEQGVQRSCSSQSGRSGGKNSKKSQSWYNVLSPTYKQRN
Formulation:	Liquid. Purified antibody supplied in 1x PBS buffer with 0.09% (w/v) sodium azide and 2% sucrose.
Conjugation:	Unconjugated
Storage:	Store at -20°C as received.
Stability:	Stable for 12 months from date of receipt.
Predicted Protein Size:	81 kDa
Gene Name:	GRAM domain containing 1B
Database Link:	<a href="#">NP_065767</a> <a href="#">Entrez Gene 57476 Human</a> <a href="#">Q3KR37</a>
Background:	The function of this protein remains unknown.
Synonyms:	KIAA1201; MGC125622; MGC125623; MGC125625
Note:	Immunogen sequence homology: Dog: 100%; Pig: 100%; Rat: 100%; Horse: 100%; Human: 100%; Mouse: 100%; Bovine: 100%; Rabbit: 100%; Zebrafish: 100%
Protein Families:	Transmembrane



[View online »](#)

**Product images:**

Host: Rabbit; Target Name: GRAMD1B; Sample  
Tissue: Jurkat Whole Cell lysates; Antibody  
Dilution: 1.0ug/ml