

## Product datasheet for **TA331818**

### CFAP92 Rabbit Polyclonal Antibody

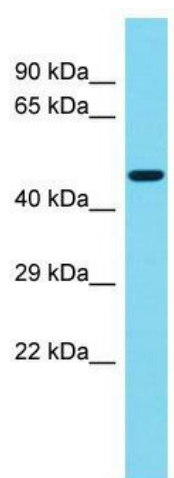
#### Product data:

Product Type:	Primary Antibodies
Applications:	WB
Recommended Dilution:	WB
Reactivity:	Human
Host:	Rabbit
Isotype:	IgG
Clonality:	Polyclonal
Immunogen:	The immunogen for Anti-KIAA1257 Antibody is: synthetic peptide directed towards the C-terminal region of Human KIAA1257. Synthetic peptide located within the following region: SMMEIKELIESESLSSLTNILDRQRSQIKGKDSEGRRKIQRRHKKPLAEE
Formulation:	Liquid. Purified antibody supplied in 1x PBS buffer with 0.09% (w/v) sodium azide and 2% sucrose. <i>Note that this product is shipped as lyophilized powder to China customers.</i>
Conjugation:	Unconjugated
Storage:	Store at -20°C as received.
Stability:	Stable for 12 months from date of receipt.
Predicted Protein Size:	44 kDa
Gene Name:	KIAA1257
Database Link:	<a href="#">NP_065792</a> <a href="#">Entrez Gene 57501 Human</a> <a href="#">Q9ULG3</a>
Background:	The function of this protein remains unknown.
Synonyms:	KIAA1257
Note:	Immunogen sequence homology: Human: 100%



[View online »](#)

## Product images:



Host: Rabbit; Target Name: KIAA1257; Sample Tissue: Fetal Brain lysates; Antibody Dilution: 1.0ug/ml