

Product datasheet for **TA331817**

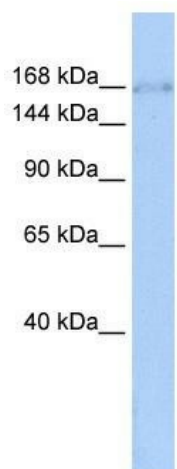
ZNF608 Rabbit Polyclonal Antibody

Product data:

Product Type:	Primary Antibodies
Applications:	WB
Recommended Dilution:	WB
Reactivity:	Human
Host:	Rabbit
Isotype:	IgG
Clonality:	Polyclonal
Immunogen:	The immunogen for Anti-ZNF608 Antibody: synthetic peptide directed towards the middle region of human ZNF608. Synthetic peptide located within the following region: QTGVDPTSRFKQDPDSRTWHHYVYQPKYLDQKSEELDREKCLKEDSPRK
Formulation:	Liquid. Purified antibody supplied in 1x PBS buffer with 0.09% (w/v) sodium azide and 2% sucrose. <i>Note that this product is shipped as lyophilized powder to China customers.</i>
Conjugation:	Unconjugated
Storage:	Store at -20°C as received.
Stability:	Stable for 12 months from date of receipt.
Predicted Protein Size:	162 kDa
Gene Name:	zinc finger protein 608
Database Link:	NP_065798 Entrez Gene 57507 Human Q9ULD9
Background:	The exact function of ZNF608 remains unknown.
Synonyms:	NY-REN-36
Note:	Immunogen sequence homology: Dog: 100%; Pig: 100%; Rat: 100%; Horse: 100%; Human: 100%; Bovine: 100%; Guinea pig: 100%; Mouse: 92%; Rabbit: 92%



[View online »](#)

Product images:

WB Suggested Anti-ZNF608 Antibody Titration:
0.2-1 ug/ml; ELISA Titer: 1: 1562500; Positive
Control: HeLa cell lysate